

# IFNA10 Polyclonal Antibody

Catalog Number:E-AB-91646



**Note:** Centrifuge before opening to ensure complete recovery of vial contents.

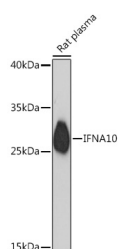
## Description

<b>Reactivity</b>	Rat
<b>Immunogen</b>	Recombinant fusion protein of human IFNA10
<b>Host</b>	Rabbit
<b>Isotype</b>	IgG
<b>Purification</b>	Affinity purification
<b>Conjugation</b>	Unconjugated
<b>Formulation</b>	PBS with 0.01% thiomersal, 50% glycerol, pH7.3.

## Applications Recommended Dilution

<b>WB</b>	1:500-1:2000
-----------	--------------

## Data



Western blot analysis of extracts of Rat plasma using IFNA10 Polyclonal Antibody at 1:1000 dilution.

**Observed MW:25kDa**

## Preparation & Storage

<b>Storage</b>	Store at -20°C. Avoid freeze/thaw cycles.
----------------	---

## Background

This gene encodes a protein that belongs to the type I interferon family of proteins, and is located in a cluster of alpha interferon genes on chromosome 9. Interferons are small regulatory molecules that function in cell signaling in response to viruses and other pathogens or tumor cells. This gene is intronless and the encoded protein is secreted.

## For Research Use Only

A Reliable Research Partner in Life Science and Medicine

Toll-free: 1-888-852-8623

Web: [www.elabscience.com](http://www.elabscience.com)

Tel: 1-832-243-6086

Email: [techsupport@elabscience.com](mailto:techsupport@elabscience.com)

Fax: 1-832-243-6017