

## FITC Anti-Human CD10 Antibody[CB-CALLA]

Catalog Number: E-AB-F1078C

Note: Centrifuge before opening to ensure complete recovery of vial contents.

### Description

|                                |  |
|--------------------------------|--|
| <b>Reactivity</b>              | Human  |
| <b>Host</b>                    | Mouse  |
| <b>Isotype</b>                 | Mouse IgG1, κ  |
| <b>Clone No.</b>               | CB-CALLA   |
| <b>Isotype Control</b>         | FITC Mouse IgG1, κ Isotype Control[MOPC-21] [Product E-AB-F09792C]   |
| <b>Conjugation</b>             | FITC   |
| <b>Conjugation Information</b> | FITC is designed to be excited by the Blue laser (488 nm) and detected using an optical filter centered near 530 nm (e.g., a 525/40 nm bandpass filter). |
| <b>Storage Buffer</b>          | Phosphate buffered solution, pH 7.2, containing 0.09% sodium azide and 1% BSA.   |

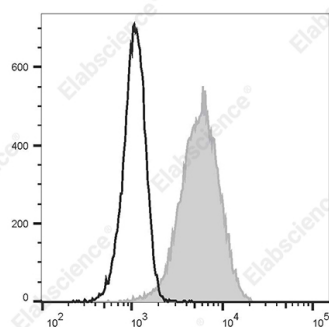
### Applications

### Recommended usage

#### FCM

Each lot of this antibody is quality control tested by flow cytometric analysis. **The amount of the reagent is suggested to be used 5 μL of antibody per test (million cells in 100 μL staining volume or per 100 μL of whole blood).** Please check your vial before the experiment. Since applications vary, the appropriate dilutions must be determined for individual use.

### Data



Human peripheral blood granulocytes are stained with FITC Anti-Human CD10 Antibody[CB-CALLA] (filled gray histogram) or FITC Mouse IgG1, κ Isotype Control (empty black histogram).

### Preparation & Storage

|                 |   |
|-----------------|---|
| <b>Storage</b>  | Keep as concentrated solution.<br>This product can be stored at 2-8°C for 12 months. Please protected from prolonged exposure to light and do not freeze. |
| <b>Shipping</b> | Ice bag   |

### Antigen Information

|                        |  |
|------------------------|--|
| <b>Alternate Names</b> | CALLA;CD10;MME;NEP;Nepilysin;Neutral endopeptidase;SFE |
| <b>Uniprot ID</b>      | P08473   |
| <b>Gene ID</b>         | 4311   |

### For Research Use Only

## Background

CD10 is a 100 kD neutral endopeptidase and a member of the metalloprotease family. It is a type II transmembrane protein also known as common acute lymphoblastic leukemia antigen (CALLA), enkephalinase, and neprilysin. CD10 is expressed on B cell precursors, T cell precursors, and neutrophils. CD10 is involved in B cell development and has been shown to bind opioid enkephalins, bradykinin, angiotensins I and II, and other biologically active peptides.