

GPR22 Polyclonal Antibody

Catalog Number:E-AB-19931



Note: Centrifuge before opening to ensure complete recovery of vial contents.

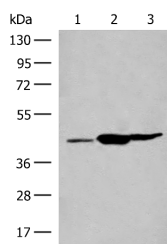
Description

Reactivity	Human, Mouse
Immunogen	Synthetic peptide of human GPR22
Host	Rabbit
Isotype	IgG
Purification	Antigen affinity purification
Conjugation	Unconjugated
Formulation	PBS with 0.05% NaN ₃ and 40% Glycerol,pH7.4

Applications Recommended Dilution

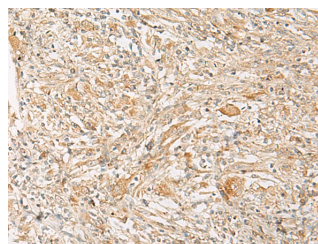
WB	1:500-1:2000
IHC	1:40-1:200
ELISA	1:5000-1:10000

Data



Western blot analysis of Mouse liver tissue Mouse kidney tissue Rat brain tissue lysates using GPR22 Polyclonal Antibody at dilution of 1:500

Observed MW:Refer to figures
Calculated Mw:49 kDa



Immunohistochemistry of paraffin-embedded Human liver cancer tissue using GPR22 Polyclonal Antibody at dilution of 1:50(×200)

Preparation & Storage

Storage Store at -20°C. Avoid freeze / thaw cycles.

Background

This gene is a member of the G-protein coupled receptor 1 family and encodes a multi-pass membrane protein.

For Research Use Only

A Reliable Research Partner in Life Science and Medicine

Toll-free: 1-888-852-8623

Web: www.elabscience.com

Tel: 1-832-243-6086

Email: techsupport@elabscience.com

Fax: 1-832-243-6017