

Recombinant CDK1/Cdc2 Monoclonal Antibody

catalog number: AN301969L

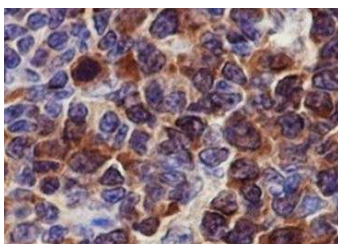
Note: Centrifuge before opening to ensure complete recovery of vial contents.

Description

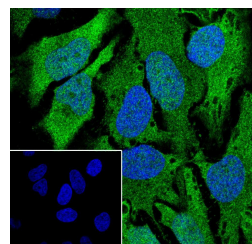
Reactivity	Human;Rat;Mouse;African green monkey
Immunogen	Recombinant human CDK1/Cdc2 fragment
Host	Rabbit
Isotype	IgG, κ
Clone	A685
Purification	Protein A purified
Buffer	PBS, 50% glycerol, 0.05% Proclin 300, 0.05% protein protectant.

Applications Recommended Dilution

WB	1:1000
IHC	1:50-1:100
IF	1:50-1:100
FCM	1:50-1:100



Immunohistochemistry of paraffin-embedded Human tonsil using CDK1/Cdc2 Monoclonal Antibody at dilution of 1:100.



Immunofluorescent analysis of (4% Paraformaldehyde) fixed HeLa cells using anti-CDK1/Cdc2 Monoclonal Antibody at dilution of 1:100.

Preparation & Storage

Storage	Store at -20°C Valid for 12 months. Avoid freeze / thaw cycles.
Shipping	Ice bag

Background

CDC2, also named as CDK1, belongs to the protein kinase superfamily. The entry of eukaryotic cells into mitosis is regulated by cdc2 kinase activation, a process controlled at several steps including cyclin binding and phosphorylation of cdc2 at Thr161. However, the critical regulatory step in activating cdc2 during progression into mitosis appears to be dephosphorylation of cdc2 at Thr14 and Tyr15. Phosphorylation at Thr14 and Tyr15, resulting in inhibition of cdc2, can be carried out by Wee1 and Myt1 protein kinases.

For Research Use Only

Toll-free: 1-888-852-8623
Web: www.elabscience.com

Tel: 1-832-243-6086
Email: techsupport@elabscience.com

Fax: 1-832-243-6017

Rev. V1.0