

Recombinant Vitronectin/S-Protein Monoclonal Antibody

catalog number: **AN301686L**

Note: Centrifuge before opening to ensure complete recovery of vial contents.

Description

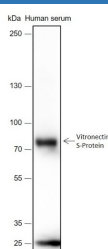
Reactivity	Human;
Immunogen	Recombinant human Vitronectin/S-Protein fragment
Host	Rabbit
Isotype	IgG, κ
Clone	A389
Purification	Protein A purified
Buffer	PBS, 50% glycerol, 0.05% Proclin 300, 0.05% protein protectant.

Applications

Recommended Dilution

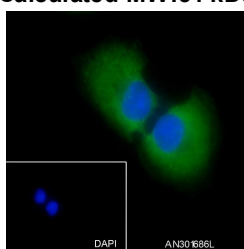
WB	1:500-1:2000
IHC	1:50-1:100
IF	1:50
FCM	1:50-1:100

Data

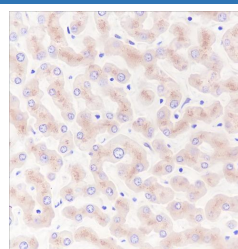


Western Blot with Vitronectin/S-Protein Monoclonal Antibody at dilution of 1:2000. Lane 1: Human serum

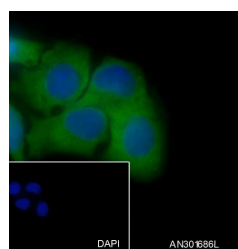
Observed-MW:75 kDa
Calculated-MW:54 kDa



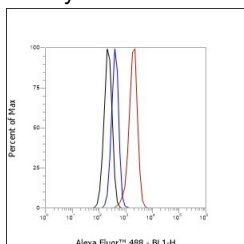
Immunofluorescent analysis of (4% Paraformaldehyde) fixed A549 cells using anti-Vitronectin/S-Protein Monoclonal Antibody at dilution of 1:50.



Immunohistochemistry of paraffin-embedded Human liver using Vitronectin/S-Protein Monoclonal Antibody at dilution of 1:100.



Immunofluorescent analysis of (4% Paraformaldehyde) fixed HepG2 cells using anti-Vitronectin/S-Protein Monoclonal Antibody at dilution of 1:50.



For Research Use Only

Flow cytometric analysis of human Vitronectin/S-Protein expression on HepG2 cells. Cells were stained with purified anti-Human Vitronectin/S-Protein, then a Alexa Fluor 488-conjugated second step antibody. The histogram were derived from events with the forward and side light-scatter characteristics of intact cells.

Preparation & Storage

Storage Store at -20°C Valid for 12 months. Avoid freeze / thaw cycles.
Shipping Ice bag

Background

Vitronectin is a cell adhesion and spreading factor found in serum and tissues. Vitronectin interact with glycosaminoglycans and proteoglycans. Is recognized by certain members of the integrin family and serves as a cell-to-substrate adhesion molecule. Inhibitor of the membrane-damaging effect of the terminal cytolytic complement pathway.

For Research Use Only