

# Recombinant Human Calcitonin/CALCA Protein (His Tag, E. coli)



Catalog Number: PKSH032146

**Note:** Centrifuge before opening to ensure complete recovery of vial contents.

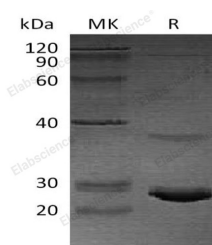
## Description

<b>Synonyms</b>	Calcitonin; Katalcalcin; Calcitonin Carboxyl-Terminal Peptide; CCP; PDN-21; CALCA; CALC1
<b>Species</b>	Human
<b>Expression Host</b>	E.coli
<b>Sequence</b>	Tyr58-Asn141
<b>Accession</b>	P01258
<b>Calculated Molecular Weight</b>	10.5 kDa
<b>Observed molecular weight</b>	14-20 kDa
<b>Tag</b>	C-His

## Properties

<b>Purity</b>	> 90 % as determined by reducing SDS-PAGE.
<b>Endotoxin</b>	< 1.0 EU per µg of the protein as determined by the LAL method.
<b>Storage</b>	Store at < -20°C, stable for 6 months. Please minimize freeze-thaw cycles.
<b>Shipping</b>	This product is provided as liquid. It is shipped at frozen temperature with blue ice/gel packs. Upon receipt, store it immediately at < -20°C.
<b>Formulation</b>	Supplied as a 0.2 µm filtered solution of 20mM PB, 150mM NaCl, 50% Glycerol, pH 7.4.
<b>Reconstitution</b>	Not Applicable

## Data



> 90 % as determined by reducing SDS-PAGE.

## Background

Calcitonin is a secreted protein which belongs to the calcitonin family. Calcitonin is cleaved into the following two chains: Calcitonin and Katalcalcin. Katalcalcin is a potent plasma calcium-lowering peptide. Calcitonin is a 32-amino acid linear polypeptide hormone. Calcitonin acts to reduce blood calcium (Ca<sup>2+</sup>); opposing the effects of parathyroid hormone (PTH). Its importance in humans has not been as well established as its importance in other animals; as its function is usually not significant in the regulation of normal calcium homeostasis. Calcitonin causes a rapid but short-lived drop in the level of calcium and phosphate in blood by promoting the incorporation of those ions in the bones.

## For Research Use Only

A Reliable Research Partner in Life Science and Medicine

Toll-free: 1-888-852-8623

Web: [www.elabscience.com](http://www.elabscience.com)

Tel: 1-832-243-6086

Email: [techsupport@elabscience.com](mailto:techsupport@elabscience.com)

Fax: 1-832-243-6017