

Recombinant Mouse IL22 protein (His tag)

Catalog Number: PDEM100062



Note: Centrifuge before opening to ensure complete recovery of vial contents.

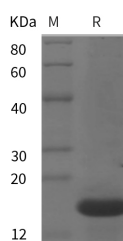
Description

Synonyms	Interleukin-22;IL-22;IL-TIF alpha;IL-10-related T-cell-derived-inducible factor;IL-TIF;IL22;Interleukin-22a;IL-22a
Species	Mouse
Expression Host	E.coli
Sequence	Leu 34-Val 179
Accession	Q9JJY9
Calculated Molecular Weight	16.0 kDa
Observed molecular weight	16 kDa
Tag	N-His

Properties

Purity	> 95 % as determined by reducing SDS-PAGE.
Endotoxin	Please contact us for more information.
Storage	Generally, lyophilized proteins are stable for up to 12 months when stored at -20 to -80°C. Reconstituted protein solution can be stored at 4-8°C for 2-7 days. Aliquots of reconstituted samples are stable at < -20°C for 3 months.
Shipping	This product is provided as lyophilized powder which is shipped with ice packs.
Formulation	Lyophilized from sterile PBS, pH 7.4. Normally 5 % - 8 % trehalose, mannitol and 0.01 % Tween80 are added as protectants before lyophilization. Please refer to the specific buffer information in the printed manual.
Reconstitution	Please refer to the printed manual for detailed information.

Data



> 95 % as determined by reducing SDS-PAGE.

Background

Interleukin-22 (IL-22) was initially identified as a gene induced by IL-9 in mouse T cells and mast cells. Mouse IL-22 cDNA encodes a 179 amino acid residue protein with a putative 33 amino acid signal peptide that is cleaved to generate a 147 amino acid mature protein that shares approximately 79% and 22% sequence identity with human IL22 and IL10, respectively. IL22 has been shown to activate STAT-1 and STAT-3 in several hepatoma cell lines and up-regulate the production of acute phase proteins. IL-22 is produced by normal mouse T cells upon Con A activation. Mouse IL-22 expression is also induced in various organs upon lipopolysaccharide injection, suggesting that IL-22 may be involved in inflammatory responses. The functional IL-22 receptor complex consists of two receptor subunits, IL-22R (previously an

For Research Use Only

A Reliable Research Partner in Life Science and Medicine

Toll-free: 1-888-852-8623

Web: www.elabscience.com

Tel: 1-832-243-6086

Email: techsupport@elabscience.com

Fax: 1-832-243-6017

Recombinant Mouse IL22 protein (His tag)

Catalog Number: PDEM100062



orphan receptor named CRF2-9) and IL-10R β (previously known as CRF2-4), belonging to the class II cytokine receptor family.

For Research Use Only

A Reliable Research Partner in Life Science and Medicine

Toll-free: 1-888-852-8623

Web: www.elabscience.com

Tel: 1-832-243-6086

Email: techsupport@elabscience.com

Fax: 1-832-243-6017