

ISYNA1 Polyclonal Antibody

Catalog Number: E-AB-92924



Note: Centrifuge before opening to ensure complete recovery of vial contents.

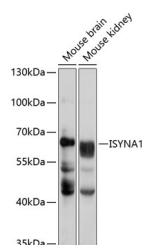
Description

| | |
|---------------------|--|
| Reactivity | Human, Mouse, Rat |
| Immunogen | Recombinant fusion protein of human ISYNA1 |
| Host | Rabbit |
| Isotype | IgG |
| Purification | Affinity purification |
| Conjugation | Unconjugated |
| Formulation | PBS with 0.01% thiomersal, 50% glycerol, pH 7.3. |

Applications Recommended Dilution

| | |
|-----------|--------------|
| WB | 1:500-1:2000 |
|-----------|--------------|

Data



Western blot analysis of extracts of various cell lines using ISYNA1 Polyclonal Antibody at 1:1000 dilution.

Observed MW: 61kDa

Calculated Mw: 47kDa/55kDa/61kDa

Preparation & Storage

Storage Store at -20°C. Avoid freeze/thaw cycles.

Background

This gene encodes an inositol-3-phosphate synthase enzyme. The encoded protein plays a critical role in the myo-inositol biosynthesis pathway by catalyzing the rate-limiting conversion of glucose 6-phosphate to myo-inositol 1-phosphate. Alternatively spliced transcript variants encoding multiple isoforms have been observed for this gene, and a pseudogene of this gene is located on the short arm of chromosome 4.

For Research Use Only

A Reliable Research Partner in Life Science and Medicine

Toll-free: 1-888-852-8623

Web: www.elabscience.com

Tel: 1-832-243-6086

Email: techsupport@elabscience.com

Fax: 1-832-243-6017