

ENO2 Monoclonal Antibody

catalog number: AN200227P

Note: Centrifuge before opening to ensure complete recovery of vial contents.

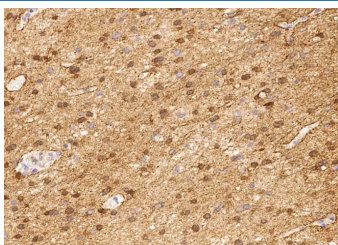
Description

Reactivity	Human
Immunogen	Recombinant Human ENO2 Protein
Host	Mouse
Isotype	IgG1
Clone	5B4
Purification	Protein A
Buffer	0.2 µm filtered solution in PBS

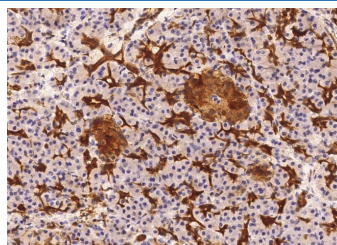
Applications Recommended Dilution

IHC-P	1:200-1:500
--------------	-------------

Data



Immunohistochemistry of paraffin-embedded human brain using ENO2 Monoclonal Antibody at dilution of 1:300.



Immunohistochemistry of paraffin-embedded human pancreas using ENO2 Monoclonal Antibody at dilution of 1:300.

Preparation & Storage

Storage	This antibody can be stored at 2°C-8°C for one month without detectable loss of activity. Antibody products are stable for twelve months from date of receipt when stored at -20°C to -80°C. Preservative-Free. Avoid repeated freeze-thaw cycles.
Shipping	Ice bag

Background

Has neurotrophic and neuroprotective properties on a broad spectrum of central nervous system (CNS) neurons. Binds, in a calcium-dependent manner, to cultured neocortical neurons and promotes cell survival.

For Research Use Only