

# RPF2 Polyclonal Antibody

catalog number: E-AB-53607

**Note:** Centrifuge before opening to ensure complete recovery of vial contents.

## Description

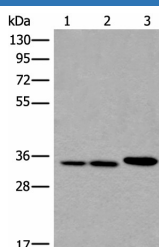
<b>Reactivity</b>	Human
<b>Immunogen</b>	Synthetic peptide of human RPF2
<b>Host</b>	Rabbit
<b>Isotype</b>	IgG
<b>Purification</b>	Antigen affinity purification
<b>Conjugation</b>	Unconjugated
<b>buffer</b>	Phosphate buffered solution, pH 7.4, containing 0.05% stabilizer and 50% glycerol.

## Applications

## Recommended Dilution

<b>WB</b>	1:500-1:2000
<b>IHC</b>	1:30-1:150

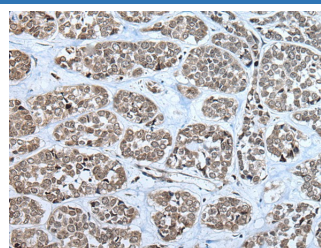
## Data



Western blot analysis of A549 HeLa and K562 cell lysates using RPF2 Polyclonal Antibody at dilution of 1:400

**Observed-MV: Refer to figures**

**Calculated-MV: 36 kDa**



Immunohistochemistry of paraffin-embedded Human esophagus cancer tissue using RPF2 Polyclonal Antibody at dilution of 1:40(×200)

## Preparation & Storage

<b>Storage</b>	Store at -20°C Valid for 12 months. Avoid freeze / thaw cycles.
<b>Shipping</b>	The product is shipped with ice pack, upon receipt, store it immediately at the temperature recommended.

## Background

BXDC1 (Brix domain-containing protein 1) is a 306 amino acid protein encoded by the human gene BXDC1. BXDC1 is a nuclear protein that contains one Brix domain. Brix domain containing proteins represent a family of proteins involved in the biogenesis of large ribosomal subunits. The Brix domain is a region with homology to the yeast protein Pitx1 ( Ribosome biogenesis protein BRX1). Pitx1 is part of a complex that includes RPF1, RPF2 and SSF1 or SSF2. This complex is required for the biogenesis of the 60S ribosomal subunit.

## For Research Use Only