

# OPRD1 Polyclonal Antibody

Catalog Number: E-AB-63881



**Note:** Centrifuge before opening to ensure complete recovery of vial contents.

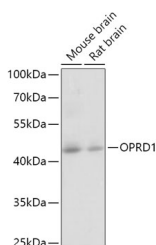
## Description

<b>Reactivity</b>	Human, Mouse, Rat
<b>Immunogen</b>	A synthetic peptide of human OPRD1 (NP_000902.3).
<b>Host</b>	Rabbit
<b>Isotype</b>	IgG
<b>Purification</b>	Affinity purification
<b>Conjugation</b>	Unconjugated
<b>Formulation</b>	PBS with 0.02% sodium azide, 50% glycerol, pH7.3.

## Applications Recommended Dilution

<b>WB</b>	1:500-1:2000
-----------	--------------

## Data



Western blot analysis of extracts of various cell lines using OPRD1 Polyclonal Antibody at dilution of 1:1000.

**Observed MW: 43kDa**  
**Calculated Mw: 40kDa**

## Preparation & Storage

**Storage** Store at -20°C. Avoid freeze / thaw cycles.

## Background

OPRD1 (Opioid Receptor Delta 1) is a Protein Coding gene. Diseases associated with OPRD1 include Morphine Dependence and Heroin Dependence. Among its related pathways are Signaling by GPCR and Sphingolipid signaling pathway. Gene Ontology (GO) annotations related to this gene include G protein-coupled receptor activity and opioid receptor activity. An important paralog of this gene is OPRM1.

## For Research Use Only

A Reliable Research Partner in Life Science and Medicine

Toll-free: 1-888-852-8623

Web: [www.elabscience.com](http://www.elabscience.com)

Tel: 1-832-243-6086

Email: [techsupport@elabscience.com](mailto:techsupport@elabscience.com)

Fax: 1-832-243-6017