

Recombinant Human CLEC3B/Tetranectin Protein (His Tag)



Catalog Number: PKSH032257

Note: Centrifuge before opening to ensure complete recovery of vial contents.

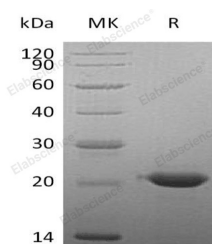
Description

Synonyms	Tetranectin;TN;C-Type Lectin Domain Family 3 Member B;Plasminogen Kringle 4-Binding Protein;CLEC3B;TNA
Species	Human
Expression Host	HEK293 Cells
Sequence	Glu22-Val202
Accession	AAH11024.1
Calculated Molecular Weight	21.2 kDa
Observed molecular weight	20 kDa
Tag	C-His

Properties

Purity	> 95 % as determined by reducing SDS-PAGE.
Endotoxin	< 1.0 EU per µg of the protein as determined by the LAL method.
Storage	Generally, lyophilized proteins are stable for up to 12 months when stored at -20 to -80°C. Reconstituted protein solution can be stored at 4-8°C for 2-7 days. Aliquots of reconstituted samples are stable at < -20°C for 3 months.
Shipping	This product is provided as lyophilized powder which is shipped with ice packs.
Formulation	Lyophilized from a 0.2 µm filtered solution of PBS, pH 7.4. Normally 5 % - 8 % trehalose, mannitol and 0.01 % Tween80 are added as protectants before lyophilization. Please refer to the specific buffer information in the printed manual.
Reconstitution	Please refer to the printed manual for detailed information.

Data



> 95 % as determined by reducing SDS-PAGE.

Background

C-Type Lectin Domain Family 3 Member B (CLEC3B) is a serum and tissue protein and it contains a C-type lectin which binds to Ca⁺⁺. CLEC3B is originally found in plasma, the concentrations approximately 10mg/l. It can bind to kringle 4 of plasminogen and enhance the activation of plasminogen to plasmin, catalyzed by tissue plasminogen activator in the presence of poly-D-lysine. In addition, CLEC3B may be involved in the packaging of molecules destined for exocytosis. Also, CLEC3B is best known as a prognostic marker in ovarian cancer.

For Research Use Only

A Reliable Research Partner in Life Science and Medicine

Toll-free: 1-888-852-8623

Web: www.elabscience.com

Tel: 1-832-243-6086

Email: techsupport@elabscience.com

Fax: 1-832-243-6017