

# Recombinant Human Oncomodulin-1/OCM Protein (His Tag)



Catalog Number:PKSH032834

**Note:** Centrifuge before opening to ensure complete recovery of vial contents.

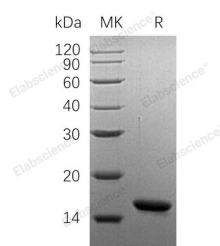
## Description

<b>Synonyms</b>	Oncomodulin-1;OM;Parvalbumin Beta;OCM;OCM1;OCMN
<b>Species</b>	Human
<b>Expression Host</b>	E.coli
<b>Sequence</b>	Met 1-Ser109
<b>Accession</b>	P0CE72
<b>Calculated Molecular Weight</b>	14.3 kDa
<b>Observed molecular weight</b>	16 kDa
<b>Tag</b>	N-His

## Properties

<b>Purity</b>	> 95 % as determined by reducing SDS-PAGE.
<b>Endotoxin</b>	< 1.0 EU per µg of the protein as determined by the LAL method.
<b>Storage</b>	Generally, lyophilized proteins are stable for up to 12 months when stored at -20 to -80°C. Reconstituted protein solution can be stored at 4-8°C for 2-7 days. Aliquots of reconstituted samples are stable at < -20°C for 3 months.
<b>Shipping</b>	This product is provided as lyophilized powder which is shipped with ice packs.
<b>Formulation</b>	Lyophilized from a 0.2 µm filtered solution of 50mM Tris-HCl, 100mM NaCl, pH 8.0. Normally 5 % - 8 % trehalose, mannitol and 0.01 % Tween80 are added as protectants before lyophilization. Please refer to the specific buffer information in the print
<b>Reconstitution</b>	Please refer to the printed manual for detailed information.

## Data



> 95 % as determined by reducing SDS-PAGE.

## Background

Oncomodulin-1 (OM) is a small, calcium-binding protein and a macrophage-derived growth factor, which can promote axon regeneration in retinal ganglion cells. Oncomodulin-1 is constitutively secreted by activated macrophages in the vitreous and retina in response to inflammatory conditions that promote optic nerve regeneration. Oncomodulin-1 binds RGCs with high affinity in vitro, but only when cAMP is pharmacologically elevated or if the membrane is permeabilized allowing Oncomodulin-1 access to the cytosolic compartment. Oncomodulin-1 is a member of the superfamily of calmodulin proteins and is a high-affinity calcium ion-binding protein and contains 2 EF-hand domains. OM is found in early embryonic cells in the placenta and also in tumors. It has some calmodulin-like activity with respect to enzyme

## For Research Use Only

A Reliable Research Partner in Life Science and Medicine

Toll-free: 1-888-852-8623

Web: [www.elabscience.com](http://www.elabscience.com)

Tel: 1-832-243-6086

Email: [techsupport@elabscience.com](mailto:techsupport@elabscience.com)

Fax: 1-832-243-6017

# Recombinant Human Oncomodulin-1/OCM Protein (His Tag)

Catalog Number:PKSH032834

---



activation and growth regulation.

---

## For Research Use Only

A Reliable Research Partner in Life Science and Medicine

Toll-free: 1-888-852-8623

Web: [www.elabscience.com](http://www.elabscience.com)

Tel: 1-832-243-6086

Email: [techsupport@elabscience.com](mailto:techsupport@elabscience.com)

Fax: 1-832-243-6017