

# LXR alpha Polyclonal Antibody

Catalog Number: E-AB-70218



**Note:** Centrifuge before opening to ensure complete recovery of vial contents.

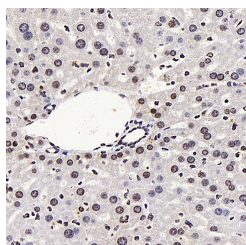
## Description

<b>Reactivity</b>	Mouse,Rat
<b>Immunogen</b>	KLH conjugated Synthetic peptide corresponding to Mouse LXR $\alpha$
<b>Host</b>	Rabbit
<b>Isotype</b>	IgG
<b>Purification</b>	Affinity purification
<b>Conjugation</b>	Unconjugated
<b>Formulation</b>	PBS with 0.02% sodium azide, 1% protective protein and 50% glycerol, pH7.4

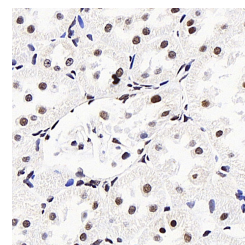
## Applications Recommended Dilution

<b>IHC</b>	1:400-1:1500
------------	--------------

## Data



Immunohistochemistry analysis of paraffin-embedded mouse liver using LXR alpha Polyclonal Antibody at dilution of 1:400.



Immunohistochemistry analysis of paraffin-embedded rat kidney using LXR alpha Polyclonal Antibody at dilution of 1:400.

## Preparation & Storage

**Storage** Store at -20°C. Avoid freeze / thaw cycles.

## Background

NR1H3, also known as LXRA, is a liver X receptor, which forms a subfamily of the nuclear receptor superfamily and are key regulators of macrophage function, controlling transcriptional programs involved in lipid homeostasis and inflammation. It's also a ligand-activated LXR and forms heterodimers with retinoid X receptor, then participates in regulating expression of target genes containing LXR response elements.

## For Research Use Only

A Reliable Research Partner in Life Science and Medicine

Toll-free: 1-888-852-8623

Web: [www.elabscience.com](http://www.elabscience.com)

Tel: 1-832-243-6086

Email: [techsupport@elabscience.com](mailto:techsupport@elabscience.com)

Fax: 1-832-243-6017