

# PSMA4 Polyclonal Antibody

catalog number: E-AB-52721

**Note:** Centrifuge before opening to ensure complete recovery of vial contents.

## Description

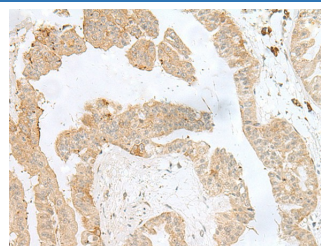
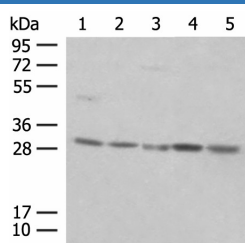
<b>Reactivity</b>	Human;Mouse;Rat
<b>Immunogen</b>	Fusion protein of human PSMA4
<b>Host</b>	Rabbit
<b>Isotype</b>	IgG
<b>Purification</b>	Antigen affinity purification
<b>Conjugation</b>	Unconjugated
<b>buffer</b>	Phosphate buffered solution, pH 7.4, containing 0.05% stabilizer and 50% glycerol.

## Applications

## Recommended Dilution

<b>WB</b>	1:500-1:2000
<b>IHC</b>	1:40-1:200

## Data



Western blot analysis of NIH/3T3 cell Mouse spleen tissue K562 cell Hela cell 231 cell lysates using PSMA4 Polyclonal Antibody at dilution of 1:400

Immunohistochemistry of paraffin-embedded Human liver cancer tissue using PSMA4 Polyclonal Antibody at dilution of 1:50( $\times 200$ )

**Observed-MV: Refer to figures**

**Calculated-MV: 29 kDa**

## Preparation & Storage

<b>Storage</b>	Store at $-20^{\circ}\text{C}$ Valid for 12 months. Avoid freeze / thaw cycles.
<b>Shipping</b>	The product is shipped with ice pack, upon receipt, store it immediately at the temperature recommended.

## Background

This gene encodes a core alpha subunit of the 20S proteasome, which is a highly ordered ring-shaped structure composed of four rings of 28 non-identical subunits. Proteasomes cleave peptides in an ATP- and ubiquitin-dependent manner.

## For Research Use Only