

PE/Cyanine5.5 Anti-Rat CD8a Antibody[OX-8]

Catalog Number: E-AB-F1098I

Note: Centrifuge before opening to ensure complete recovery of vial contents.

Description

Reactivity	Rat
Host	Mouse
Isotype	Mouse IgG1, κ
Clone No.	OX-8
Isotype Control	PE/Cyanine5.5 Mouse IgG1, κ Isotype Control[MOPC-21] [Product E-AB-F09792I]
Conjugation	PE/Cyanine 5.5
Conjugation Information	PE/Cyanine5.5 is designed to be excited by the Blue (488 nm), Green (532 nm) and yellow-green (561 nm) lasers and detected using an optical filter centered near 690 nm (e.g., a 690/50 nm bandpass filter).
Storage Buffer	Phosphate buffered solution, pH 7.2, containing 0.09% stabilizer and 1% protein protectant.

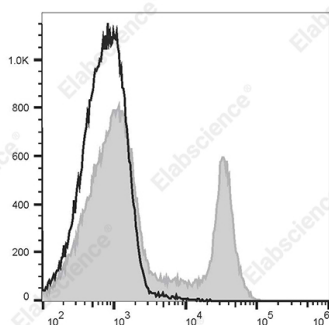
Applications

Recommended usage

FCM

Each lot of this antibody is quality control tested by flow cytometric analysis. **The amount of the reagent is suggested to be used 5 μL of antibody per test (million cells in 100 μL staining volume or per 100 μL of whole blood).** Please check your vial before the experiment. Since applications vary, the appropriate dilutions must be determined for individual use.

Data



Rat splenocytes are stained with PE/Cyanine5.5 Anti-Rat CD8a Antibody[OX-8] (filled gray histogram) or PE/Cyanine5.5 Mouse IgG1, κ Isotype Control (empty black histogram).

Preparation & Storage

Storage	Keep as concentrated solution. This product can be stored at 2-8°C for 12 months. Please protected from prolonged exposure to light and do not freeze.
Shipping	Ice bag

Antigen Information

Alternate Names	CD8A;MAL;T-cell surface glycoprotein CD8 alpha chain;T-lymphocyte differentiation antigen T8/Leu-2
-----------------	--

For Research Use Only

Uniprot ID

P07725

Gene ID

24930

Background

CD8a is a 32 kD glycoprotein also known as T8, Lyt2, Ly-2, and CD8 α . CD8a is a member of the immunoglobulin superfamily expressed on most thymocytes, subset of mature T cells, most NK cells, macrophages, and some activated CD4+ T cells (not resting). CD8a forms heterodimers with the CD8 β chain (CD8b) on the surface of most thymocytes, while mature peripheral T lymphocytes express almost exclusively the CD8 $\alpha\beta$ heterodimer. Intestinal intraepithelial lymphocytes express CD8a without CD8 b. CD8 is an antigen co-receptor on T cells that interacts with MHC class I on antigen-presenting cells or epithelial cells. CD8 participates in T cell activation through its association with the T cell receptor complex and protein tyrosine kinase lck (p56lck).

For Research Use Only