

Recombinant Human IL-2 Receptor Subunit Beta/IL-2RB/CD122 (C-6His-Avi) Biotinylated

Catalog Number: PKSH033917



Note: Centrifuge before opening to ensure complete recovery of vial contents.

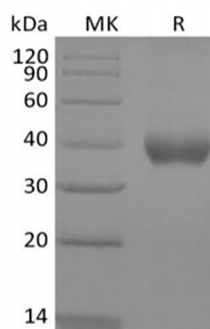
Description

Species	Human
Mol_Mass	27.4 kDa
Accession	P14784
Bio-activity	Not validated for activity

Properties

Purity	> 95 % as determined by reducing SDS-PAGE.
Endotoxin	< 1.0 EU per µg of the protein as determined by the LAL method.
Storage	Generally, lyophilized proteins are stable for up to 12 months when stored at -20 to -80 °C. Reconstituted protein solution can be stored at 4-8°C for 2-7 days. Aliquots of reconstituted samples are stable at < -20°C for 3 months.
Shipping	This product is provided as lyophilized powder which is shipped with ice packs.
Formulation	Lyophilized from a 0.2 µm filtered solution of PBS, pH 7.4. Normally 5% - 8% trehalose, mannitol and 0.01% Tween 80 are added as protectants before lyophilization. Please refer to the specific buffer information in the printed manual.
Reconstitution	Please refer to the printed manual for detailed information.

Data



> 95 % as determined by reducing SDS-PAGE.

Background

Human IL-2RB, also known as interleukin-2 receptor subunit beta, is the receptor for interleukin-2. IL2 receptor complex is involved in receptor mediated endocytosis and transduces the mitogenic signals of IL2. IL2 receptor complex has three forms with respect to ability to bind IL2. IL-2RB is belonged to a type I membrane protein, and has a 26 residue signal peptide, a 214 residue extracellular region, a 25 residue transmembrane region and a 286 residue cytoplasmic domain. IL-2RB is the subunit critical for receptor-mediated signaling via physically or functionally coupling to other signaling molecules, such as the Jak-STAT and Src-family protein tyrosine kinase although it lacks apparent catalytic motifs.

For Research Use Only

A Reliable Research Partner in Life Science and Medicine
Tel: 400-999-2100

Email: techsupport@elabscience.cn

Web: www.elabscience.cn

Rev. V3.2