

UBE2E2 Polyclonal Antibody

Catalog Number:E-AB-91527



Note: Centrifuge before opening to ensure complete recovery of vial contents.

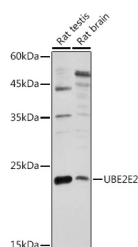
Description

Reactivity	Mouse,Rat
Immunogen	Recombinant fusion protein of human UBE2E2
Host	Rabbit
Isotype	IgG
Purification	Affinity purification
Conjugation	Unconjugated
Formulation	PBS with 0.01% thiomersal,50% glycerol,pH7.3.

Applications Recommended Dilution

WB	1:500-1:2000
-----------	--------------

Data



Western blot analysis of extracts of various cell lines using UBE2E2 Polyclonal Antibody at 1:1000 dilution.

Observed MW:22KDa

Calculated Mw:22kDa

Preparation & Storage

Storage Store at -20°C. Avoid freeze/thaw cycles.

Background

Ube2E2 is an E2 enzyme, which is part of the E1, E2, and E3 cascade responsible for ubiquitination of protein substrates. It shares 96% identical amino acid sequence with Ube2E1 and Ube2E3 with the exception of the N-terminal extension that has little in common with the other two E2s. Ube2E2 interacts with ARA54 and RNF8. The RNF8/ Ube2E2 interaction is found to catalyze K48-linked poly-ubiquitination. Ube2E2 may play a role in ubiquitination and subsequent proteasomal degradation of the E3 Ub ligase Parkin.

For Research Use Only

A Reliable Research Partner in Life Science and Medicine

Toll-free: 1-888-852-8623

Web: www.elabscience.com

Tel: 1-832-243-6086

Email: techsupport@elabscience.com

Fax: 1-832-243-6017