

Recombinant Human CTGF/CCN2 Protein

Catalog Number:PKSH032277



Note: Centrifuge before opening to ensure complete recovery of vial contents.

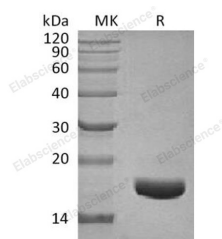
Description

Synonyms	Connective tissue growth factor;CCN family member 2;Hypertrophic chondrocyte-specific protein 24;Insulin-like growth factor-binding protein 8;IBP-8;IGF-binding protein 8;IGFBP-8
Species	Human
Expression Host	HEK293 Cells
Sequence	Glu27-Ala180
Accession	Q5M8T4
Calculated Molecular Weight	16.3 kDa
Observed molecular weight	16-25 kDa
Tag	None

Properties

Purity	> 95 % as determined by reducing SDS-PAGE.
Endotoxin	< 1.0 EU per µg of the protein as determined by the LAL method.
Storage	Generally, lyophilized proteins are stable for up to 12 months when stored at -20 to -80°C. Reconstituted protein solution can be stored at 4-8°C for 2-7 days. Aliquots of reconstituted samples are stable at < -20°C for 3 months.
Shipping	This product is provided as lyophilized powder which is shipped with ice packs.
Formulation	Lyophilized from a 0.2 µm filtered solution of PBS, pH 7.4. Normally 5 % - 8 % trehalose, mannitol and 0.01% Tween80 are added as protectants before lyophilization. Please refer to the specific buffer information in the printed manual.
Reconstitution	Please refer to the printed manual for detailed information.

Data



> 95 % as determined by reducing SDS-PAGE.

Background

CTGF belongs to the CCN (CTGF/Cyr61/Cef10/NOVH) protein family; which is comprised of six secreted proteins that reside in the extracellular matrix (ECM). CTGF causes a variety of cellular responses including reduced cell adhesion and enhanced cell migration and proliferation. CTGF has also been shown to be essential for epithelial to mesenchymal transition (EMT); a process whereby normal functioning cells morph into ones that produce mainly scar tissue (of which collagen is the major protein component).

For Research Use Only

A Reliable Research Partner in Life Science and Medicine

Toll-free: 1-888-852-8623

Web: www.elabscience.com

Tel: 1-832-243-6086

Email: techsupport@elabscience.com

Fax: 1-832-243-6017