

# Recombinant Human ADAM15 Protein (HEK293 Cells, His Tag)



Catalog Number:PKSH031554

**Note:** Centrifuge before opening to ensure complete recovery of vial contents.

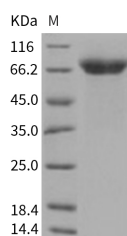
## Description

<b>Synonyms</b>	MDC15
<b>Species</b>	Human
<b>Expression Host</b>	HEK293 Cells
<b>Sequence</b>	Met 1-Thr 696
<b>Accession</b>	NP_997074.1
<b>Calculated Molecular Weight</b>	54.0 kDa
<b>Observed molecular weight</b>	65-70 kDa
<b>Tag</b>	C-His

## Properties

<b>Purity</b>	> 97 % as determined by reducing SDS-PAGE.
<b>Endotoxin</b>	< 1.0 EU per µg of the protein as determined by the LAL method.
<b>Storage</b>	Generally, lyophilized proteins are stable for up to 12 months when stored at -20 to -80°C. Reconstituted protein solution can be stored at 4-8°C for 2-7 days. Aliquots of reconstituted samples are stable at < -20°C for 3 months.
<b>Shipping</b>	This product is provided as lyophilized powder which is shipped with ice packs.
<b>Formulation</b>	Lyophilized from sterile PBS, pH 7.4 Normally 5 % - 8 % trehalose, mannitol and 0.01 % Tween80 are added as protectants before lyophilization. Please refer to the specific buffer information in the printed manual.
<b>Reconstitution</b>	Please refer to the printed manual for detailed information.

## Data



> 97 % as determined by reducing SDS-PAGE.

## Background

ADAM15, also known as Metargidin, is a type I transmembrane glycoprotein belonging to the ADAM (A Disintegrin and Metalloprotease Domain) family of proteins and is widely expressed in different tissues and cell types. Members of this family contain an amino-terminal metalloprotease domain followed by a disintegrin domain, a cysteine-rich region and a membrane proximal EGF-like domain. The disintegrin domain of ADAM15/metargidin contains an RGD tripeptide sequence, suggesting that it may potentially interact with the integrin family of proteins. ADAM15 is a transmembrane multi-domain proteins implicated in proteolysis, cell-cell and cell-matrix interactions in various disease conditions. There is also evidence supporting a role for ADAM15 in angiogenesis and angioinvasion of tumor cells, which are critical for unrestrained tumor growth and metastatic spread. Given its diverse functions, ADAM15 may represent a pivotal

## For Research Use Only

A Reliable Research Partner in Life Science and Medicine

Toll-free: 1-888-852-8623

Web: [www.elabscience.com](http://www.elabscience.com)

Tel: 1-832-243-6086

Email: [techsupport@elabscience.com](mailto:techsupport@elabscience.com)

Fax: 1-832-243-6017

# Recombinant Human ADAM15 Protein (HEK293 Cells, His Tag)



Catalog Number:PKSH031554

---

regulatory component of tumor progression, an important target for therapeutic intervention, or emerge as a biomarker of disease progression.

---

## For Research Use Only

A Reliable Research Partner in Life Science and Medicine

Toll-free: 1-888-852-8623

Tel: 1-832-243-6086

Fax: 1-832-243-6017

Web: [www.elabscience.com](http://www.elabscience.com)

Email: [techsupport@elabscience.com](mailto:techsupport@elabscience.com)