

SIGLEC6 Polyclonal Antibody

catalog number: E-AB-52953

Note: Centrifuge before opening to ensure complete recovery of vial contents.

Description

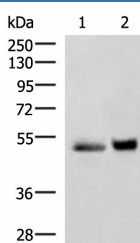
| | |
|---------------------|--|
| Reactivity | Human |
| Immunogen | Fusion protein of human SIGLEC6 |
| Host | Rabbit |
| Isotype | IgG |
| Purification | Antigen affinity purification |
| Conjugation | Unconjugated |
| buffer | Phosphate buffered solution, pH 7.4, containing 0.05% stabilizer and 50% glycerol. |

Applications

Recommended Dilution

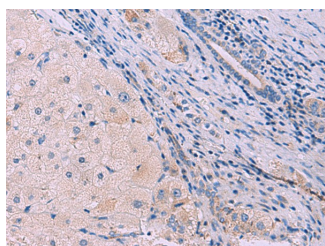
| | |
|------------|--------------|
| WB | 1:500-1:2000 |
| IHC | 1:40-1:200 |

Data

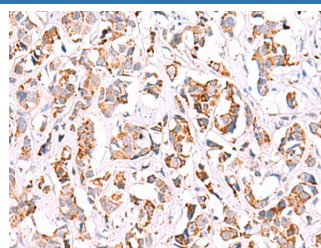


Western blot analysis of Human right lower lung tissue and Human plasma solution lysates using SIGLEC6 Polyclonal Antibody at dilution of 1:650

Observed-MV: Refer to figures
Calculated-MV: 50 kDa



Immunohistochemistry of paraffin-embedded Human liver cancer tissue using SIGLEC6 Polyclonal Antibody at dilution of 1:50(×200)



Immunohistochemistry of paraffin-embedded Human breast cancer tissue using SIGLEC6 Polyclonal Antibody at dilution of 1:50(×200)

Preparation & Storage

| | |
|-----------------|--|
| Storage | Store at -20°C Valid for 12 months. Avoid freeze / thaw cycles. |
| Shipping | The product is shipped with ice pack, upon receipt, store it immediately at the temperature recommended. |

Background

For Research Use Only

SIGLEC6 Polyclonal Antibody

catalog number: E-AB-52953



The SIGLEC6 gene is located on 19q13.3, which is where the CD33 gene is located. Putative adhesion molecule that mediates sialic-acid dependent binding to cells. Binds to alpha-2,6-linked sialic acid. The sialic acid recognition site may be masked by cis interactions with sialic acids on the same cell surface. Expressed at high levels in placenta (cyto- and syncytiotrophoblastic cells) and at lower levels in spleen, peripheral blood leukocytes (predominantly B-cells) and small intestine.

For Research Use Only

A Reliable Research Partner in Life Science and Medicine
Tel: 400-999-2100

Email: techsupport@elabscience.cn

Web: www.elabscience.cn

Rev. V1.7