

## TROP2/TACSTD2 Monoclonal Antibody

catalog number: **AN200176P**

**Note:** Centrifuge before opening to ensure complete recovery of vial contents.

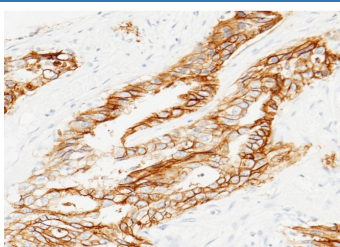
### Description

<b>Reactivity</b>	Human
<b>Immunogen</b>	Recombinant Human TROP2 protein
<b>Host</b>	Mouse
<b>Isotype</b>	IgG1
<b>Clone</b>	2C4
<b>Purification</b>	Protein A
<b>Buffer</b>	0.2 µm filtered solution in PBS

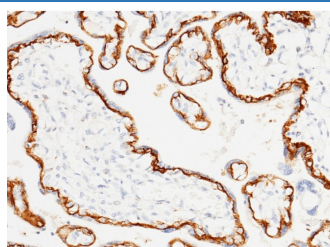
### Applications Recommended Dilution

<b>WB</b>	1:500-1:2000
<b>IHC-P</b>	1:100-1:500
<b>ICC/IF</b>	1:20-1:100
<b>FCM</b>	1:25-1:100

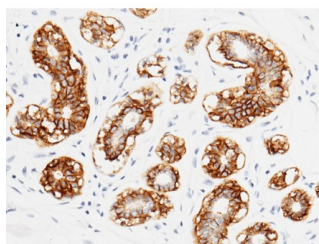
### Data



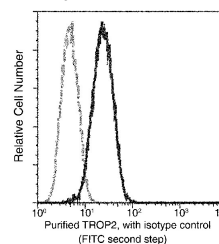
Immunohistochemistry of paraffin-embedded human rectal cancer using TROP2/TACSTD2 Monoclonal Antibody at dilution of 1:200.



Immunohistochemistry of paraffin-embedded human placenta using TROP2/TACSTD2 Monoclonal Antibody at dilution of 1:60. Positive staining was localized to membrane of cytotrophoblast.



Immunohistochemistry of paraffin-embedded human mammary gland using TROP2/TACSTD2 Monoclonal Antibody at dilution of 1:200. Positive staining was localized to membrane of alveolus epithelium.



Flow cytometric analysis of human TROP2 expression on MCF-7 cells. Cells were stained with purified anti-Human TROP2, then a FITC-conjugated second step antibody. The histogram were derived from gated events with the forward and side light-scatter characteristics of intact cells.

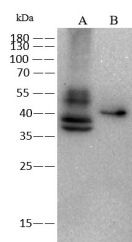
### For Research Use Only

Toll-free: 1-888-852-8623  
Web: [www.elabscience.com](http://www.elabscience.com)

Tel: 1-832-243-6086  
Email: [techsupport@elabscience.com](mailto:techsupport@elabscience.com)

Fax: 1-832-243-6017

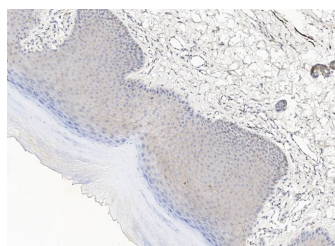
Rev. V1.0



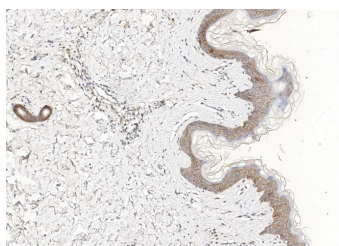
Western Blot with TROP2 Monoclonal Antibody at dilution of 1:500 dilution. Lane A: MCF7 Whole Cell Lysate, Lane B: NCI-N87 Whole Cell Lysate, Lysates/proteins at 30 µg per lane.

**Observed-MW:36-40 kDa**

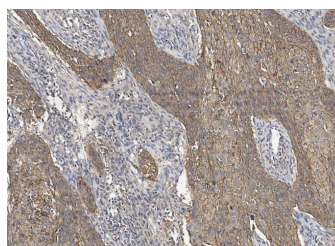
**Calculated-MW:36 kDa**



Immunohistochemistry of paraffin-embedded monkey Palm skin using TROP2/TACSTD2 Monoclonal Antibody at dilution of 1:100.



Immunohistochemistry of paraffin-embedded human skin using TROP2/TACSTD2 Monoclonal Antibody at dilution of 1:100.



Immunohistochemistry of paraffin-embedded human hystero carcinoma using TROP2/TACSTD2 Monoclonal Antibody at dilution of 1:100.

### Preparation & Storage

#### Storage

This antibody can be stored at 2°C-8°C for one month without detectable loss of activity. Antibody products are stable for twelve months from date of receipt when stored at -20°C to -80°C. Preservative-Free. Avoid repeated freeze-thaw cycles.

#### Shipping

Ice bag

### Background

This intronless gene encodes a carcinoma-associated antigen. This antigen is a cell surface receptor that transduces calcium signals. Mutations of this gene have been associated with gelatinous drop-like corneal dystrophy.

### For Research Use Only

Toll-free: 1-888-852-8623  
Web: [www.elabscience.com](http://www.elabscience.com)

Tel: 1-832-243-6086  
Email: [techsupport@elabscience.com](mailto:techsupport@elabscience.com)

Fax: 1-832-243-6017

Rev. V1.0