

## Recombinant Phospho-p53 (Ser46) Monoclonal Antibody

catalog number: **AN301140L**

**Note:** Centrifuge before opening to ensure complete recovery of vial contents.

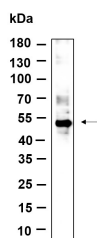
### Description

<b>Reactivity</b>	Human;Mouse
<b>Immunogen</b>	A synthetic peptide corresponding to residues around (Ser46) of Human Phospho-p53
<b>Host</b>	Rabbit
<b>Isotype</b>	IgG, $\kappa$
<b>Clone</b>	B895
<b>Purification</b>	Protein A
<b>Buffer</b>	PBS, 50% glycerol, 0.05% Proclin 300, 0.05% protein protectant.

### Applications Recommended Dilution

<b>IHC</b>	1:200-1:1000
<b>WB</b>	1:2000-1:10000

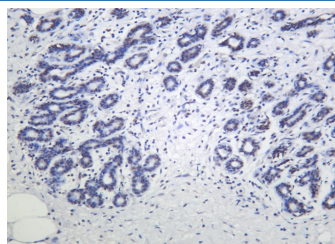
### Data



Western Blot with Recombinant Phospho-p53 (Ser46) Monoclonal Antibody at dilution of 1:1000 dilution. Lane A: HEK293.

**Observed-MW:53 kDa**

**Calculated-MW:44 kDa**



Immunohistochemistry of paraffin-embedded human breast carcinoma using Recombinant Phospho-p53 (Ser46) Monoclonal Antibody at dilution of 1:200.

### Preparation & Storage

<b>Storage</b>	Store at -20°C Valid for 12 months. Avoid freeze / thaw cycles.
<b>Shipping</b>	Ice bag

### Background

**TP53(tumor protein p53) Homo sapiens** This gene encodes a tumor suppressor protein containing transcriptional activation, DNA binding, and oligomerization domains. The encoded protein responds to diverse cellular stresses to regulate expression of target genes, thereby inducing cell cycle arrest, apoptosis, senescence, DNA repair, or changes in metabolism. Mutations in this gene are associated with a variety of human cancers, including hereditary cancers such as Li-Fraumeni syndrome. Alternative splicing of this gene and the use of alternate promoters result in multiple transcript variants and isoforms. Additional isoforms have also been shown to result from the use of alternate translation initiation codons (PMIDs: 12032546, 20937277).

### For Research Use Only