

Recombinant Phospho-ERK1/2 (Thr202, Tyr204) Monoclonal Antibody

catalog number: **AN300365L**

Note: Centrifuge before opening to ensure complete recovery of vial contents.

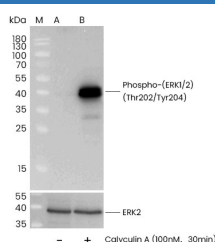
Description

Reactivity	Human
Immunogen	A synthetic phosphopeptide corresponding to residues around Thr202, Tyr204 of Human Phospho-ERK1/2.
Host	Rabbit
Isotype	IgG
Clone	11A1
Purification	Protein A
Buffer	10 mM sodium HEPES, 150 mM NaCl, 100 µg/mL protein protectant, 50% glycerol, pH 7.5

Applications Recommended Dilution

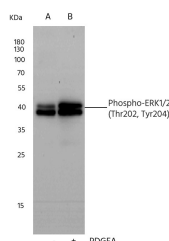
WB	1:1000-1:20000
-----------	----------------

Data



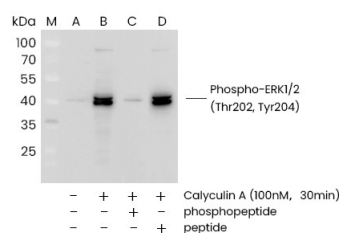
Western blot analysis of extracts from serum-starved HeLa, untreated (-) or treated with Calyculin A (100 nM, 30 min; +), using Phospho-p44/42 MAPK (ERK1/2) (Thr202, Tyr204) rabbit monoclonal Antibody (upper), or Anti-ERK2 rabbit polyclonal antibody at 1:1000 dilution(lower).

Observed-MW:41 kDa
Calculated-MW:41 kDa



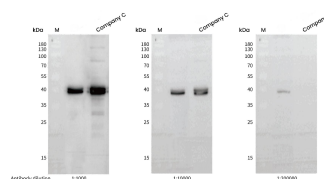
Western blot analysis of 15 µg extracts from serum-starved NIH-3T3, untreated (-); treated with PDGFA (5 µg/mL, 5 min; +), using Phospho-ERK1/2 (Thr202, Tyr204) Antibody, Rabbit MAb at 1:1000 dilution.

Observed-MW:41 kDa
Calculated-MW:41 kDa



Western blot analysis of extracts from serum-starved HeLa, untreated (line A); treated with Calyculin A (100 nM, 30 min), without peptide (line B) or antigen-specific phosphopeptide (line C) or antigen-specific peptide (line D) using Phospho-p44/42 MAPK (ERK1/2) (Thr202, Tyr204) rabbit monoclonal Antibody at 1:1000 dilution.

Observed-MW:41 kDa
Calculated-MW:41 kDa



Western blot analysis of extracts from serum-starved HeLa, treated with Calyculin A (100 nM, 30 min), using Phospho-p44/42 MAPK (ERK1/2) (Thr202, Tyr204) rabbit monoclonal Antibody (Sino Biological) and other brands' antibodies (company C) at dilution. of 1:1000, 1:10000 and 1:200000.

Observed-MW:41 kDa
Calculated-MW:41 kDa

Preparation & Storage

For Research Use Only

Toll-free: 1-888-852-8623
Web: www.elabscience.com

Tel: 1-832-243-6086
Email: techsupport@elabscience.com

Fax: 1-832-243-6017

Rev. V1.0

Storage

This antibody can be stored at 2°C-8°C for one month without detectable loss of activity. Antibody products are stable for twelve months from date of receipt when stored at -20°C to -80°C. Preservative-Free. Avoid repeated freeze-thaw cycles.

Shipping

Ice bag

Background

The protein encoded by this gene is a member of the MAP kinase family. MAP kinases, also known as extracellular signal-regulated kinases (ERKs), act in a signaling cascade that regulates various cellular processes such as proliferation, differentiation, and cell cycle progression in response to a variety of extracellular signals. This kinase is activated by upstream kinases, resulting in its translocation to the nucleus where it phosphorylates nuclear targets. Alternatively spliced transcript variants encoding different protein isoforms have been described.

For Research Use Only

Toll-free: 1-888-852-8623
Web: www.elabscience.com

Tel: 1-832-243-6086
Email: techsupport@elabscience.com

Fax: 1-832-243-6017

Rev. V1.0