

## Recombinant Bcl-2 Monoclonal Antibody

catalog number: **AN300885L**

**Note:** Centrifuge before opening to ensure complete recovery of vial contents.

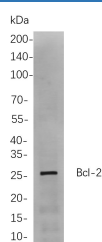
### Description

<b>Reactivity</b>	Human;Mouse;Rat
<b>Immunogen</b>	Recombinant Human Bcl-2 protein
<b>Host</b>	Rabbit
<b>Isotype</b>	IgG, $\kappa$
<b>Clone</b>	B832
<b>Purification</b>	Protein A
<b>Buffer</b>	PBS, 50% glycerol, 0.05% Proclin 300, 0.05% protein protectant.

### Applications

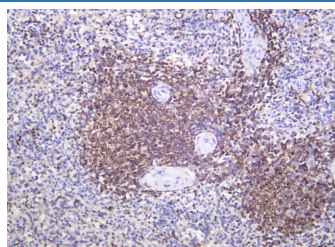
Applications	Recommended Dilution
IHC	1:500-1:2000
WB	1:2000-1:10000
IF	1:200-1:1000
ELISA	1:5000-1:20000

### Data



Western Blot with Recombinant Bcl-2 Monoclonal Antibody at dilution of 1:1000. Lane A: MCF7 cells.

**Observed-MW:26 kDa**  
**Calculated-MW:26 kDa**



Immunohistochemistry of paraffin-embedded human spleen using Recombinant Bcl-2 Monoclonal Antibody at dilution of 1:200.

### Preparation & Storage

<b>Storage</b>	Store at -20°C Valid for 12 months. Avoid freeze / thaw cycles.
<b>Shipping</b>	Ice bag

### Background

BCL2, apoptosis regulator(BCL2) Homo sapiens This gene encodes an integral outer mitochondrial membrane protein that blocks the apoptotic death of some cells such as lymphocytes. Constitutive expression of BCL2, such as in the case of translocation of BCL2 to Ig heavy chain locus, is thought to be the cause of follicular lymphoma. Alternative splicing results in multiple transcript variants.

### For Research Use Only