

CD10 Monoclonal Antibody

catalog number: **AN200185P**

Note: Centrifuge before opening to ensure complete recovery of vial contents.

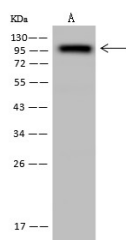
Description

Reactivity	Human
Immunogen	Recombinant Human CD10 Protein
Host	Mouse
Isotype	IgG1
Clone	6A10
Purification	Protein A
Buffer	0.2 µm filtered solution in PBS

Applications Recommended Dilution

WB	1:500-1:2000
IHC-P	1:20-1:100
IP	1-5 µL/mg of lysate

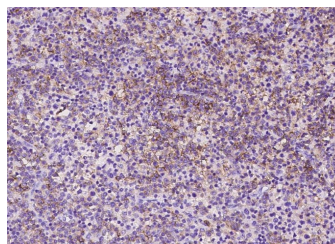
Data



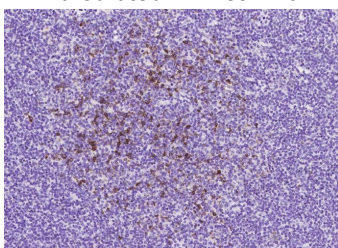
Western Blot with MME Monoclonal Antibody at dilution of 1:500 dilution. Lane A: Raji Whole Cell Lysate, Lysates/proteins at 30 µg per lane.

Observed-MW:95 kDa

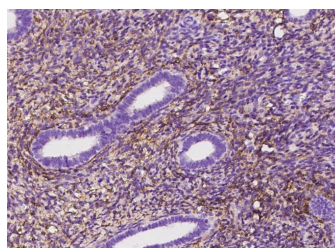
Calculated-MW:85 kDa



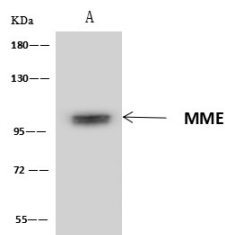
Immunohistochemistry of paraffin-embedded human lymphoma using CD10 Monoclonal Antibody at dilution of 1:100.



Immunohistochemistry of paraffin-embedded human Submandibular gland inflammation using CD10 Monoclonal Antibody at dilution of 1:100.



Immunohistochemistry of paraffin-embedded human uterus cancer using CD10 Monoclonal Antibody at dilution of 1:100.



For Research Use Only

Toll-free: 1-888-852-8623
Web: www.elabscience.com

Tel: 1-832-243-6086
Email: techsupport@elabscience.com

Fax: 1-832-243-6017

Rev. V1.0

Immunoprecipitation analysis using 4 µL anti-MME Monoclonal Antibody and 60 µg of Immunomagnetic beads

Protein A/G. Western blot was performed from the immunoprecipitate using MME Monoclonal Antibody at a dilution of 1:100. Lane A:0.5 mg Raji Whole Cell Lysate

Observed-MW:95 kDa

Calculated-MW:85 kDa

Preparation & Storage

Storage	This antibody can be stored at 2°C-8°C for one month without detectable loss of activity. Antibody products are stable for twelve months from date of receipt when stored at -20°C to -80°C. Preservative-Free. Avoid repeated freeze-thaw cycles.
Shipping	Ice bag

Background

This gene encodes a common acute lymphocytic leukemia antigen that is an important cell surface marker in the diagnosis of human acute lymphocytic leukemia (ALL). This protein is present on leukemic cells of pre-B phenotype, which represent 85% of cases of ALL. This protein is not restricted to leukemic cells, however, and is found on a variety of normal tissues. It is a glycoprotein that is particularly abundant in kidney, where it is present on the brush border of proximal tubules and on glomerular epithelium. The protein is a neutral endopeptidase that cleaves peptides at the amino side of hydrophobic residues and inactivates several peptide hormones including glucagon, enkephalins, substance P, neurotensin, oxytocin, and bradykinin. This gene, which encodes a 100-kD type II transmembrane glycoprotein, exists in a single copy of greater than 45 kb. The 5' untranslated region of this gene is alternatively spliced, resulting in four separate mRNA transcripts. The coding region is not affected by alternative splicing.

For Research Use Only