

## Recombinant ASGPR1 Monoclonal Antibody

catalog number: **AN300206P**

**Note:** Centrifuge before opening to ensure complete recovery of vial contents.

### Description

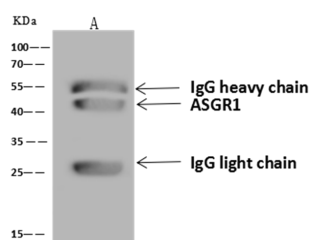
<b>Reactivity</b>	Human
<b>Immunogen</b>	Recombinant Human ASGPR1 protein
<b>Host</b>	Rabbit
<b>Isotype</b>	IgG
<b>Clone</b>	8C9
<b>Purification</b>	Protein A
<b>Buffer</b>	0.2 µm filtered solution in PBS

### Applications

### Recommended Dilution

<b>WB</b>	1:500-1:2000
<b>IP</b>	1-4 µL/mg of lysate

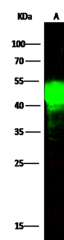
### Data



Immunoprecipitation analysis using 4 µL anti-ASGR1 Monoclonal Antibody and 60 µg of Immunomagnetic beads Protein A/G. Western blot was performed from the immunoprecipitate using ASGR1 Monoclonal Antibody at a dilution of 1:100. Lane A: 0.5 mg HepG2 Whole Cell Lysate

**Observed-MW:43 kDa**

**Calculated-MW:33 kDa**



Western Blot with ASGPR1 Monoclonal Antibody at dilution of 1:500. Lane A: HepG2 Whole Cell Lysate, Lysates/proteins at 30 µg per lane.

**Observed-MW:43 kDa**

**Calculated-MW:33 kDa**

### Preparation & Storage

<b>Storage</b>	This antibody can be stored at 2°C-8°C for one month without detectable loss of activity. Antibody products are stable for twelve months from date of receipt when stored at -20°C to -80°C. Preservative-Free. Avoid repeated freeze-thaw cycles.
<b>Shipping</b>	Ice bag

### Background

This gene encodes a subunit of the asialoglycoprotein receptor. This receptor is a transmembrane protein that plays a critical role in serum glycoprotein homeostasis by mediating the endocytosis and lysosomal degradation of glycoproteins with exposed terminal galactose or N-acetylgalactosamine residues. The asialoglycoprotein receptor may facilitate hepatic infection by multiple viruses including hepatitis B, and is also a target for liver-specific drug delivery. The asialoglycoprotein receptor is a hetero-oligomeric protein composed of major and minor subunits, which are encoded by different genes. The protein encoded by this gene is the more abundant major subunit. Alternatively spliced transcript variants encoding multiple isoforms have been observed for this gene.

### For Research Use Only