

Purified Anti-Whitlow 218 Linker Antibody[DA011]

catalog number: AN009990P

Note: Centrifuge before opening to ensure complete recovery of vial contents.

Description

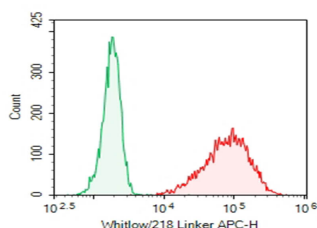
Immunogen	Synthetic peptide
Host	Rabbit
Isotype	Rabbit IgG
Clone	DA011
Purification	>98%, Protein A/G purified
Buffer	Phosphate-buffered solution, pH 7.2, containing 0.05% non-protein stabilizer. Dialyze to completely remove the stabilizer prior to labeling.

Applications

Recommended Dilution

FCM	2 µg/mL(0.5×10 ⁶ -1×10 ⁶ cells)
------------	---

Data



HEK293T cells transfected with anti-CD19(FMC63 scFv with Whitlow/218 Linker) CAR were stained with 0.2 µg Purified Anti-Whitlow/218 Linker Antibody[DA011] (Right) and 0.2 µg Rabbit IgG, κ Isotype Control (Left), followed by APC-conjugated Goat Anti-Rabbit IgG Secondary Antibody.

Preparation & Storage

Storage	Store at 4°C valid for 12 months or -20°C valid for long term storage, avoid freeze / thaw cycles.
Shipping	Ice bag

Background

The whitlow/218 linker, with the sequence GSTSGSGKPGSGEGSTKG, is a commonly used synthetic peptide linker. Whitlow/218 linker often leveraged to connect the variable heavy (VH) domain and variable light (VL) domain of single-chain variable fragments (scFvs) and chimeric antigen receptors (CARs) that utilize an extracellular domain scFv for target antigen recognition. The scFv containing the 218 linker showed reduced aggregation and was found to be more stable to proteolysis in vitro.

For Research Use Only