

Recombinant hCG beta Monoclonal Antibody

catalog number: **AN301544L**

Note: Centrifuge before opening to ensure complete recovery of vial contents.

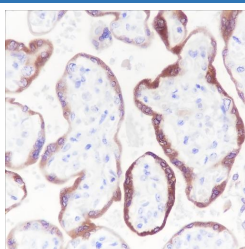
Description

Reactivity	Human;
Immunogen	Recombinant human hCG beta fragment
Host	Rabbit
Isotype	IgG, κ
Clone	A243
Purification	Protein A purified
Buffer	PBS, 50% glycerol, 0.05% Proclin 300, 0.05% protein protectant.

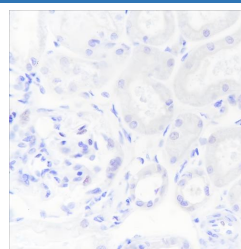
Applications Recommended Dilution

IHC	1:50-1:100
FCM	1:50-1:100

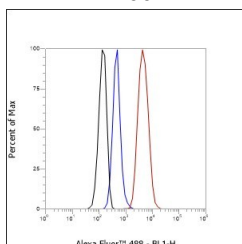
Data



Immunohistochemistry of paraffin-embedded Human placenta using hCG beta Monoclonal Antibody at dilution of 1:100.



Immunohistochemistry of paraffin-embedded Human kidney (Negative tissue) using hCG beta Monoclonal Antibody at dilution of 1:100.



Flow cytometric analysis of human hCG beta expression on U-2 OS cells. Cells were stained with purified anti-Human hCG beta, then a Alexa Fluor 488-conjugated second step antibody. The histogram were derived from events with the forward and side light-scatter characteristics of intact cells.

Preparation & Storage

Storage	Store at -20°C Valid for 12 months. Avoid freeze / thaw cycles.
Shipping	Ice bag

Background

For Research Use Only

Toll-free: 1-888-852-8623
Web: www.elabscience.com

Tel: 1-832-243-6086
Email: techsupport@elabscience.com

Fax: 1-832-243-6017

Rev. V1.0

Beta subunit of the human chorionic gonadotropin (hCG). hCG is a complex glycoprotein composed of two glycosylated subunits alpha and beta which are non-covalently associated. The alpha subunit is identical to those in the pituitary gonadotropin hormones (LH, FSH and TSH). The beta subunits are distinct in each of the hormones and confer receptor and biological specificity. Has an essential role in pregnancy and maternal adaptation. Stimulates the ovaries to synthesize the steroids that are essential for the maintenance of pregnancy.