

Recombinant Human CLUL1 Protein (His Tag)

Catalog Number: PKSH032262

Note: Centrifuge before opening to ensure complete recovery of vial contents.

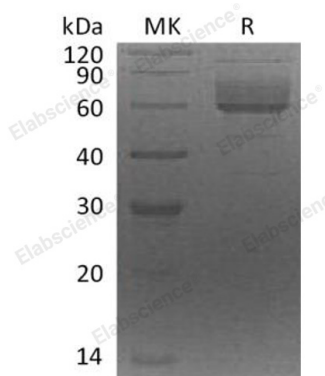
Description

Species	Human
Source	HEK293 Cells-derived Human CLUL1 protein Ala21-Ala442, with an C-terminal His
Calculated MW	50.1 kDa
Observed MW	59-75 kDa
Accession	Q15846
Bio-activity	Not validated for activity

Properties

Purity	> 90 % as determined by reducing SDS-PAGE.
Endotoxin	< 1.0 EU per µg of the protein as determined by the LAL method.
Storage	Generally, lyophilized proteins are stable for up to 12 months when stored at -20 to -80 °C. Reconstituted protein solution can be stored at 4-8°C for 2-7 days. Aliquots of reconstituted samples are stable at < -20°C for 3 months.
Shipping	This product is provided as lyophilized powder which is shipped with ice packs.
Formulation	Lyophilized from a 0.2 µm filtered solution of 20mM Tris-HCl, 150mM NaCl, pH 8.0. Normally 5% - 8% trehalose, mannitol and 0.01% Tween 80 are added as protectants before lyophilization.
	Please refer to the specific buffer information in the printed manual.
Reconstitution	Please refer to the printed manual for detailed information.

Data



> 90 % as determined by reducing SDS-PAGE.

Background

Clusterin-Like Protein 1 (CLUL1) is a secreted protein that belongs to the clusterin family. CLUL1 is synthesized as a 466 amino acid precursor that contains a 20 amino acid signal sequence, and a 446 amino acid mature chain. CLUL1 is expressed predominantly by cone photoreceptors of the retina. It has been shown that CLUL1 expression is down-regulated in some forms of retinal disease.

For Research Use Only