

## Recombinant Human SGTA Protein (His Tag)

**Catalog Number:** PKSH033051

**Note:** Centrifuge before opening to ensure complete recovery of vial contents.

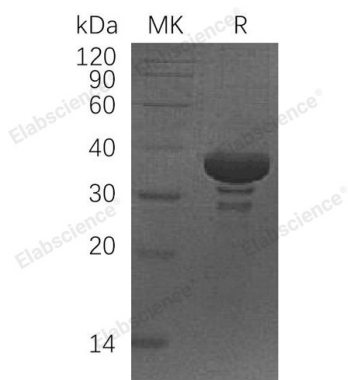
### Description

<b>Species</b>	Human
<b>Source</b>	E.coli-derived Human SGTA protein Met 1-Glu313, with an N-terminal His
<b>Calculated MW</b>	36.2 kDa
<b>Observed MW</b>	35 kDa
<b>Accession</b>	O43765
<b>Bio-activity</b>	Not validated for activity

### Properties

<b>Purity</b>	> 95 % as determined by reducing SDS-PAGE.
<b>Endotoxin</b>	< 1.0 EU per µg of the protein as determined by the LAL method.
<b>Storage</b>	Generally, lyophilized proteins are stable for up to 12 months when stored at -20 to -80 °C. Reconstituted protein solution can be stored at 4-8°C for 2-7 days. Aliquots of reconstituted samples are stable at < -20°C for 3 months.
<b>Shipping</b>	This product is provided as lyophilized powder which is shipped with ice packs.
<b>Formulation</b>	Lyophilized from a 0.2 µm filtered solution of 20mM Tris-HCl, 150mM NaCl, pH 8.0. Normally 5% - 8% trehalose, mannitol and 0.01% Tween 80 are added as protectants before lyophilization.
<b>Reconstitution</b>	Please refer to the specific buffer information in the printed manual.

### Data



> 95 % as determined by reducing SDS-PAGE.

### Background

Small Glutamine-Rich Tetratricopeptide Repeat-Containing Protein  $\alpha$  (SGTA) is an ubiquitously expressed protein which belongs to the SGT Family. SGTA contains three TPR Protein-Protein Interaction Duplicates. SGTA is a co-chaperone that binds directly to HSC70 and HSP70 and regulates their ATPase activity. SGTA is capable of interacting with the major nonstructural protein of Parvovirus H-1 and 70-kDa heat shock cognate protein. It interacts with NS1 from Parvovirus H-1, with Vpu and Gag from HIV-1. It also interacts with SARS-CoV Accessory Protein 7a, DNAJC5 and DNAJC5B. However, its function is not known. Since this transcript is expressed ubiquitously in various tissues, SGTA may serve a housekeeping function.

### For Research Use Only