

## TCERG1L Monoclonal Antibody

**catalog number:** AN200092P

**Note:** Centrifuge before opening to ensure complete recovery of vial contents.

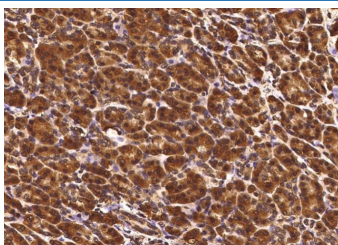
### Description

<b>Reactivity</b>	Human
<b>Immunogen</b>	A synthetic peptide corresponding to the C-terminus of the Human TCERG1L
<b>Host</b>	Mouse
<b>Isotype</b>	IgG1
<b>Clone</b>	A940
<b>Purification</b>	Protein A
<b>Buffer</b>	0.2 µm filtered solution in PBS

### Applications Recommended Dilution

<b>IHC-P</b>	1:250-1:1000
--------------	--------------

### Data



Immunohistochemistry of paraffin-embedded human pancreas using TCERG1L Monoclonal Antibody at dilution of 1:500.

### Preparation & Storage

<b>Storage</b>	This antibody can be stored at 2°C-8°C for one month without detectable loss of activity. Antibody products are stable for twelve months from date of receipt when stored at -20°C to -80°C. Preservative-Free. Avoid repeated freeze-thaw cycles.
<b>Shipping</b>	Ice bag

### Background

Transcription elongation regulator 1-like (TCERG1L) gene is located in chromosome 10. TCERG1L gene may have similar biological role with TCERG1 (transcription elongation regulator 1), located on human chromosome 5q32. TCERG1 (also known as TAF2S; TATA box-binding protein-associated factor 2S, CA150; transcription factor CA150) was first described as a transcriptional elongation regulator found in human immunodeficiency virus type 1 (HIV-1), tat-responsive HeLa nuclear fractions. TCERG1L gene has been reported to be highly frequently methylated in colon tumors and was selected as a candidate for the early detection of biomarkers for colon cancer patients.

### For Research Use Only

Toll-free: 1-888-852-8623  
Web: [www.elabscience.com](http://www.elabscience.com)

Tel: 1-832-243-6086  
Email: [techsupport@elabscience.com](mailto:techsupport@elabscience.com)

Fax: 1-832-243-6017

Rev. V1.1