

AMD1 Polyclonal Antibody

catalog number: **E-AB-92883**

Note: Centrifuge before opening to ensure complete recovery of vial contents.

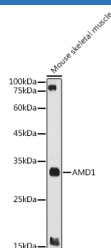
Description

Reactivity	Human;Mouse;Rat
Immunogen	Recombinant fusion protein of human AMD1
Host	Rabbit
Isotype	IgG
Purification	Affinity purification
Buffer	Phosphate buffered solution, pH 7.4, containing 0.05% stabilizer and 50% glycerol.

Applications Recommended Dilution

WB	1:500-1:2000
-----------	--------------

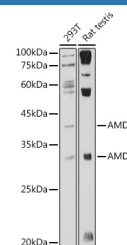
Data



Western blot analysis of extracts of Mouse skeletal muscle using AMD1 Polyclonal Antibody at 1:1000 dilution.

Observed-MW:32 kDa/42 kDa

Calculated-MW:21 kDa/38 kDa



Western blot analysis of extracts of various cell lines using AMD1 Polyclonal Antibody at 1:1000 dilution.

Observed-MW:32 kDa/42 kDa

Calculated-MW:21 kDa/38 kDa

Preparation & Storage

Storage	Store at -20°C Valid for 12 months. Avoid freeze / thaw cycles.
Shipping	The product is shipped with ice pack, upon receipt, store it immediately at the temperature recommended.

Background

This gene encodes an important intermediate enzyme in polyamine biosynthesis. The polyamines spermine, spermidine, and putrescine are low-molecular-weight aliphatic amines essential for cellular proliferation and tumor promotion. Multiple alternatively spliced transcript variants have been identified. Pseudogenes of this gene are found on chromosomes 5, 6, 10, X and Y.

For Research Use Only