

EPSTI1 Polyclonal Antibody

catalog number: E-AB-17911

Note: Centrifuge before opening to ensure complete recovery of vial contents.

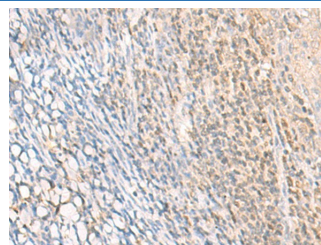
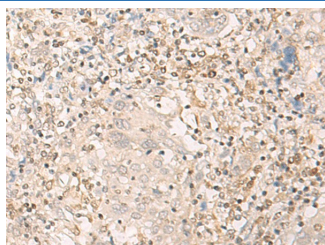
Description

| | |
|---------------------|--|
| Reactivity | Human |
| Immunogen | Synthetic peptide of human EPSTI1 |
| Host | Rabbit |
| Isotype | IgG |
| Purification | Antigen affinity purification |
| Buffer | Phosphate buffered solution, pH 7.4, containing 0.05% stabilizer and 50% glycerol. |

Applications

| Applications | Recommended Dilution |
|--------------|----------------------|
| IHC | 1:30-1:150 |

Data



Immunohistochemistry of paraffin-embedded Human cervical cancer tissue using EPSTI1 Polyclonal Antibody at dilution of 1:25(×200)

Immunohistochemistry of paraffin-embedded Human tonsil tissue using EPSTI1 Polyclonal Antibody at dilution of 1:25(×200)

Preparation & Storage

| | |
|-----------------|--|
| Storage | Store at -20°C Valid for 12 months. Avoid freeze / thaw cycles. |
| Shipping | The product is shipped with ice pack, upon receipt, store it immediately at the temperature recommended. |

Background

EPSTI1 (Epithelial-stromal interaction protein 1), also known as BRESI1, is a 318 amino acid protein that is highly expressed in spleen, placenta, small intestine, liver, kidney, thymus, testis and salivary gland. Existing as three isoforms that are formed due to alternative splicing events, EPSTI1 is weakly expressed in normal breast tissue, but is heavily up-regulated in breast carcinoma, suggesting an important role for EPSTI1 in tumor formation and/or progression. Additionally, EPSTI1 is found in blood cells from systemic lupus erythematosus (SLE)-afflicted patients, implicating EPSTI1 as a potential protein involved in SLE.

For Research Use Only