

## DHR SX Polyclonal Antibody

**catalog number: E-AB-52315**

**Note:** Centrifuge before opening to ensure complete recovery of vial contents.

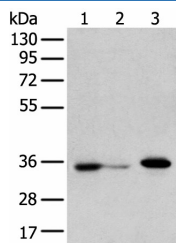
### Description

<b>Reactivity</b>	Human
<b>Immunogen</b>	Fusion protein of human DHR SX
<b>Host</b>	Rabbit
<b>Isotype</b>	IgG
<b>Purification</b>	Antigen affinity purification
<b>Buffer</b>	Phosphate buffered solution, pH 7.4, containing 0.05% stabilizer and 50% glycerol.

### Applications Recommended Dilution

<b>WB</b>	1:500-1:2000
<b>IHC</b>	1:25-1:100

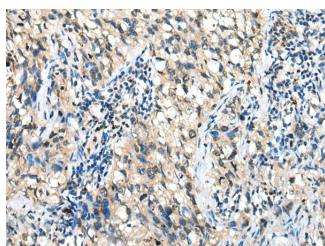
### Data



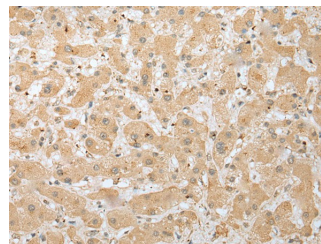
Western blot analysis of HepG2 cell Hela cell and A549 cell using DHR SX Polyclonal Antibody at dilution of 1:350

**Observed-MW: Refer to figures**

**Calculated-MW: 36 kDa**



Immunohistochemistry of paraffin-embedded Human lung cancer tissue using DHR SX Polyclonal Antibody at dilution of 1:30(×200)



Immunohistochemistry of paraffin-embedded Human liver cancer tissue using DHR SX Polyclonal Antibody at dilution of 1:30(×200)

### Preparation & Storage

<b>Storage</b>	Store at -20°C Valid for 12 months. Avoid freeze / thaw cycles.
<b>Shipping</b>	The product is shipped with ice pack, upon receipt, store it immediately at the temperature recommended.

### Background

### For Research Use Only

DHRSX (dehydrogenase/reductase SDR family member on chromosome X) is a 330 amino acid protein belonging to the short-chain dehydrogenases/reductases (SDR) family. Widely expressed, DHRSX is an oxidoreductase that contains a coenzyme binding site and a substrate binding site, indicating a possible role in cellular metabolism. The gene that encodes DHRSX is located in the pseudoautosomal region 1 (PAR1) of X and Y chromosomes. The X and Y chromosomes are the human sex chromosomes. Chromosome X consists of about 153 million base pairs and nearly 1,000 genes.

## For Research Use Only

Toll-free: 1-888-852-8623  
Web: [www.elabscience.com](http://www.elabscience.com)

Tel: 1-832-243-6086  
Email: [techsupport@elabscience.com](mailto:techsupport@elabscience.com)

Fax: 1-832-243-6017

Rev. V1.8