

Recombinant PAK3 Monoclonal Antibody

catalog number: **AN301617L**

Note: Centrifuge before opening to ensure complete recovery of vial contents.

Description

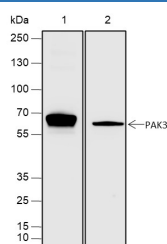
Reactivity	Human;Rat;Mouse
Immunogen	Recombinant human PAK3 fragment
Host	Rabbit
Isotype	IgG, κ
Clone	A320
Purification	Protein A purified
Buffer	PBS, 50% glycerol, 0.05% Proclin 300, 0.05% protein protectant.

Applications

Recommended Dilution

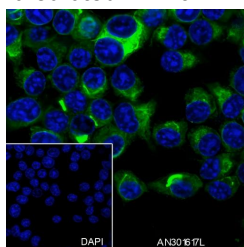
WB	1:1000-1:2000
IHC	1:200-1:1000
IF	1:50
FCM	1:50-1:100

Data

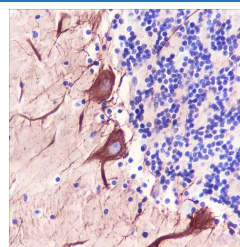


Western Blot with PAK3 Monoclonal Antibody at dilution of 1:2000. Lane 1: Rat brain, Lane 2: SH-SY5Y

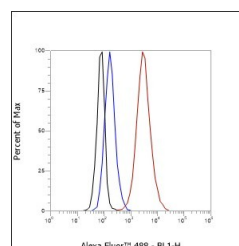
Observed-MW:62 kDa
Calculated-MW:62 kDa



Immunofluorescent analysis of (100% Ice-cold methanol) fixed Neuro-2a cells using anti-PAK3 Monoclonal Antibody at dilution of 1:50.



Immunohistochemistry of paraffin-embedded Human cerebellum using PAK3 Monoclonal Antibody at dilution of 1:1000.



Flow cytometric analysis of human PAK3 expression on SH-SY5Y cells. Cells were stained with purified anti-Human PAK3, then a Alexa Fluor 488-conjugated second step antibody. The histogram were derived from events with the forward and side light-scatter characteristics of intact cells.

Preparation & Storage

Storage	Store at -20°C Valid for 12 months. Avoid freeze / thaw cycles.
Shipping	Ice bag

Background

For Research Use Only

The p21-activated kinase (PAK) family of serine/threonine kinases is engaged in multiple cellular processes, including cytoskeletal reorganization, MAPK signaling, apoptotic signaling, control of phagocyte NADPH oxidase, and Plays a role in dendrite spine morphogenesis as well as synapse formation.

For Research Use Only

Toll-free: 1-888-852-8623
Web: www.elabscience.com

Tel: 1-832-243-6086
Email: techsupport@elabscience.com

Fax: 1-832-243-6017

Rev. V1.0