

# Pancreatic Lipase/PTL Polyclonal Antibody

catalog number: AN007000L

**Note:** Centrifuge before opening to ensure complete recovery of vial contents.

## Description

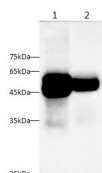
<b>Reactivity</b>	Mouse;Rat
<b>Immunogen</b>	Recombinant Human Pancreatic Lipase/PTL protein expressed by Mammalian
<b>Host</b>	Rabbit
<b>Isotype</b>	IgG
<b>Purification</b>	Antigen Affinity Purification
<b>Conjugation</b>	Unconjugated
<b>buffer</b>	PBS with 0.05% proclin 300, 1% protective protein and 50% glycerol,pH7.4

## Applications

## Recommended Dilution

**WB** 1:5000-1:10000

## Data



Western blot with Anti Pancreatic Lipase/PTL Polyclonal antibody at dilution of 1:5000. Lane 1: Mouse pancreas tissue lysate, Lane 2: Rat pancreas tissue lysate.

**Observed-MV:51kDa**

**Calculated-MV:51 kDa**

## Preparation & Storage

<b>Storage</b>	Store at -20°C Valid for 12 months. Avoid freeze / thaw cycles.
<b>Shipping</b>	The product is shipped with ice pack, upon receipt, store it immediately at the temperature recommended.

## Background

Plays an important role in fat metabolism. It preferentially splits the esters of long-chain fatty acids at positions 1 and 3, producing mainly 2-monoacylglycerol and free fatty acids, and shows considerably higher activity against insoluble emulsified substrates than against soluble ones.

## For Research Use Only