

Recombinant Myeloperoxidase Monoclonal Antibody

catalog number: **AN300630L**

Note: Centrifuge before opening to ensure complete recovery of vial contents.

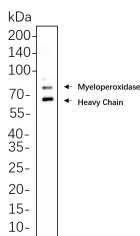
Description

| | |
|---------------------|---|
| Reactivity | Human;Mouse;Rat |
| Immunogen | Recombinant Human Myeloperoxidase protein |
| Host | Rabbit |
| Isotype | IgG, κ |
| Clone | B565 |
| Purification | Protein A |
| Buffer | PBS, 50% glycerol, 0.05% Proclin 300, 0.05% protein protectant. |

Applications Recommended Dilution

| | |
|-----------|----------------|
| WB | 1:2000-1:10000 |
|-----------|----------------|

Data



Western Blot with Recombinant Myeloperoxidase Monoclonal Antibody at dilution of 1:1000 dilution. Lane A: HL-60 cell lysate.

Observed-MW:60,80-90 kDa

Calculated-MW:84 kDa

Preparation & Storage

| | |
|-----------------|---|
| Storage | Store at -20°C Valid for 12 months. Avoid freeze / thaw cycles. |
| Shipping | Ice bag |

Background

Myeloperoxidase (MPO) is a heme protein synthesized during myeloid differentiation that constitutes the major component of neutrophil azurophilic granules. Produced as a single chain precursor, myeloperoxidase is subsequently cleaved into a light and heavy chain. The mature myeloperoxidase is a tetramer composed of 2 light chains and 2 heavy chains. This enzyme produces hypohalous acids central to the microbicidal activity of neutrophils.

For Research Use Only