

Recombinant Human CD48/SLAMF2 Protein(Fc Tag)

Catalog Number: PDMH100309



Note: Centrifuge before opening to ensure complete recovery of vial contents.

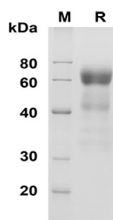
Description

Species	Human
Source	Mammalian-derived Human CD48/SLAMF2 proteins Gln27-Ser220,with an C-terminal Fc
Mol_Mass	46.2 kDa
Accession	P09326
Bio-activity	Not validated for activity

Properties

Purity	> 90% as determined by reducing SDS-PAGE.
Endotoxin	< 1.0 EU/mg of the protein as determined by the LAL method
Storage	Generally, lyophilized proteins are stable for up to 12 months when stored at -20 to -80 °C. Reconstituted protein solution can be stored at 4-8°C for 2-7 days. Aliquots of reconstituted samples are stable at < -20°C for 3 months.
Shipping	This product is provided as lyophilized powder which is shipped with ice packs.
Formulation	Lyophilized from a 0.2 µm filtered solution in PBS with 5% Trehalose and 5% Mannitol.
Reconstitution	It is recommended that sterile water be added to the vial to prepare a stock solution of 0.5 mg/mL. Concentration is measured by UV-Vis.

Data



SDS-PAGE analysis of Human CD48/SLAMF2 proteins ,
2µg/lane of Recombinant Human CD48/SLAMF2 proteins
was resolved with SDS-PAGE under reducing conditions ,
showing bands at 60 KD

Background

Cluster of Differentiation 48 (CD48) , also known as SLAMF2 , BCM-1 and BLAST-1 , is a GPI-linked protein belonging to the CD2 subfamily of immunoglobulin superfamily molecules. CD2 and 2B4 (CD244) are known ligands for CD48. CD48 protein is expressed on most lineage-committed hematopoietic cells but not on hematopoietic stem cells or multipotent hematopoietic progenitors. CD48 protein performs biological functions in a variety processes including adhesion , pathogen recognition , cellular activation , and cytokine regulation , and emerges as a critical effector molecule in immune responses.

For Research Use Only

A Reliable Research Partner in Life Science and Medicine
Tel:400-999-2100

Email:techsupport@elabscience.cn

Web:www.elabscience.cn

Rev. V1.5