

Recombinant Human INHBA Protein(Sumo Tag)

Catalog Number: PDEH101131



Note: Centrifuge before opening to ensure complete recovery of vial contents.

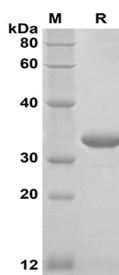
Description

Species	Human
Source	E.coli-derived Human INHBA protein Gly311-Ser426, with an N-terminal Sumo
Mol_Mass	25.6 kDa
Accession	P08476
Bio-activity	Not validated for activity

Properties

Purity	> 95% as determined by reducing SDS-PAGE.
Endotoxin	< 10 EU/mg of the protein as determined by the LAL method
Storage	Generally, lyophilized proteins are stable for up to 12 months when stored at -20 to -80 °C. Reconstituted protein solution can be stored at 4-8°C for 2-7 days. Aliquots of reconstituted samples are stable at < -20°C for 3 months.
Shipping	This product is provided as lyophilized powder which is shipped with ice packs.
Formulation	Lyophilized from a 0.2 µm filtered solution in PBS with 5% Trehalose and 5% Mannitol.
Reconstitution	It is recommended that sterile water be added to the vial to prepare a stock solution of 0.5 mg/mL. Concentration is measured by UV-Vis

Data



SDS-PAGE analysis of Human INHBA proteins, 2µg/lane of

Recombinant Human INHBA proteins was resolved with SDS-PAGE under reducing conditions, showing bands at 33 kDa

Background

For Research Use Only

A Reliable Research Partner in Life Science and Medicine
Tel:400-999-2100

Email:techsupport@elabscience.cn

Web:www.elabscience.cn

Rev. V1.0

Recombinant Human INHBA Protein(Sumo Tag)

Catalog Number: PDEH101131



Activin and inhibin are two closely related protein complexes that have almost directly opposite biological effects. The activin and inhibin protein complexes are both dimeric in structure, and, in each complex, the two monomers are linked to one another by a single disulfide bond. Activin is composed of two β subunits, $\beta A \beta A$ (activin A), $\beta B \beta B$ (activin B), or $\beta A \beta B$ (activin AB). Inhibin is composed of an alpha and one of two β subunits, βA (inhibin A) or βB (inhibin B). Activins are produced in many cell types and organs, such as gonads, pituitary gland, and placenta. In the ovarian follicle, activin increases FSH binding and FSH-induced aromatization. It participates in androgen synthesis enhancing LH action in the ovary and testis. In the male, activin enhances spermatogenesis. Also, Activin plays a role in wound repair and skin morphogenesis. Activin is strongly expressed in wounded skin, and overexpression of activin in the epidermis of transgenic mice improves wound healing and enhances scar formation. Activin also regulates the morphogenesis of branching organs such as the prostate, lung, and kidney. There is also evidence showed that lack of activin during development results in neural developmental defects.

For Research Use Only

A Reliable Research Partner in Life Science and Medicine
Tel:400-999-2100

Email:techsupport@elabscience.cn

Web:www.elabscience.cn

Rev. V1.0