

## Recombinant Synaptophysin Monoclonal Antibody

catalog number: **E-AB-81610**

**Note:** Centrifuge before opening to ensure complete recovery of vial contents.

### Description

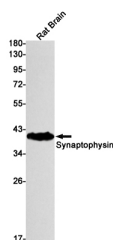
<b>Reactivity</b>	Human;Rat
<b>Immunogen</b>	A synthetic peptide of human Synaptophysin
<b>Host</b>	Rabbit
<b>Isotype</b>	IgG
<b>Clone</b>	R06-2A2
<b>Purification</b>	Affinity Purified
<b>Buffer</b>	50mM Tris-Glycine(pH 7.4), 0.15M NaCl, 40% Glycerol, 0.05% stabilizer and 0.05% protective protein.

### Applications

### Recommended Dilution

<b>WB</b>	1:1000-1:3000
<b>IHC</b>	1:20-1:100

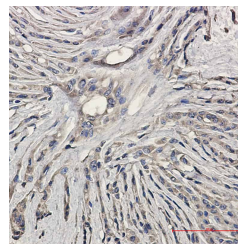
### Data



Western blot detection of Synaptophysin in Rat Brain lysates using Synaptophysin Rabbit mAb(1:1000 diluted). Predicted band size:34kDa.Observed band size:38kDa.

**Observed-MW:38 kDa**

**Calculated-MW:34 kDa**



Immunohistochemistry of Synaptophysin in paraffin-embedded Human Brain using Synaptophysin Rabbit mAb at dilution 1:20

### Preparation & Storage

<b>Storage</b>	Store at -20°C Valid for 12 months. Avoid freeze / thaw cycles.
<b>Shipping</b>	The product is shipped with ice pack,upon receipt,store it immediately at the temperature recommended.

### Background

This gene encodes an integral membrane protein of small synaptic vesicles in brain and endocrine cells. The protein also binds cholesterol and is thought to direct targeting of vesicle-associated membrane protein 2 (synaptobrevin) to intracellular compartments. Mutations in this gene are associated with X-linked mental retardation (XLMR).

### For Research Use Only