

## PKD1L2 Polyclonal Antibody

**catalog number: E-AB-65162**

**Note:** Centrifuge before opening to ensure complete recovery of vial contents.

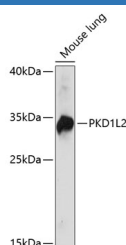
### Description

<b>Reactivity</b>	Mouse
<b>Immunogen</b>	Recombinant fusion protein of human PKD1L2 (NP_001265352.1).
<b>Host</b>	Rabbit
<b>Isotype</b>	IgG
<b>Purification</b>	Affinity purification
<b>Buffer</b>	Phosphate buffered solution, pH 7.4, containing 0.05% stabilizer and 50% glycerol.

### Applications Recommended Dilution

<b>WB</b>	1:500-1:2000
-----------	--------------

### Data



Western blot analysis of extracts of Mouse lung using PKD1L2 Polyclonal Antibody at dilution of 1:1000.

**Observed-MW:33 kDa**

**Calculated-MW:26 kDa/32 kDa/107 kDa/197 kDa/272**

**kDa**

### Preparation & Storage

<b>Storage</b>	Store at -20°C Valid for 12 months. Avoid freeze / thaw cycles.
<b>Shipping</b>	The product is shipped with ice pack, upon receipt, store it immediately at the temperature recommended.

### Background

This gene encodes a member of the polycystin protein family. The encoded protein contains 11 transmembrane domains, a latrophilin/CL-1-like GPCR proteolytic site (GPS) domain, and a polycystin-1, lipoxygenase, alpha-toxin (PLAT) domain. This protein may function as a component of cation channel pores. This gene appears to be a polymorphic pseudogene in humans, where some individuals contain a non-functional allele. Alternative splicing results in multiple transcript variants.

### For Research Use Only