

## Recombinant Human CFHR3 Protein (His Tag)

**Catalog Number:** PKSH033711

**Note:** Centrifuge before opening to ensure complete recovery of vial contents.

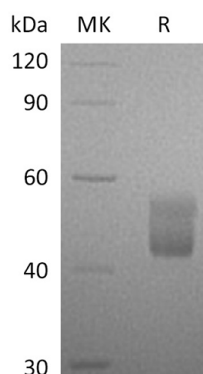
### Description

<b>Species</b>	Human
<b>Source</b>	HEK293 Cells-derived Human CFHR3 protein Gln19-Glu330, with an C-terminal His
<b>Calculated MW</b>	36.4 kDa
<b>Observed MW</b>	43-56 kDa
<b>Accession</b>	Q02985
<b>Bio-activity</b>	Not validated for activity

### Properties

<b>Purity</b>	> 95 % as determined by reducing SDS-PAGE.
<b>Endotoxin</b>	< 1.0 EU per µg of the protein as determined by the LAL method.
<b>Storage</b>	Generally, lyophilized proteins are stable for up to 12 months when stored at -20 to -80 °C. Reconstituted protein solution can be stored at 4-8°C for 2-7 days. Aliquots of reconstituted samples are stable at < -20°C for 3 months.
<b>Shipping</b>	This product is provided as lyophilized powder which is shipped with ice packs.
<b>Formulation</b>	Lyophilized from a 0.2 µm filtered solution of PBS, pH 7.4. Normally 5% - 8% trehalose, mannitol and 0.01% Tween 80 are added as protectants before lyophilization.
<b>Reconstitution</b>	Please refer to the specific buffer information in the printed manual. Please refer to the printed manual for detailed information.

### Data



> 95 % as determined by reducing SDS-PAGE.

### Background

Complement factor H-related protein 3 is a protein that in humans is encoded by the CFHR3 gene. It is a secreted protein that belongs to the complement factor H protein family. Members of the H-related protein family are exclusively composed of individually folded protein domains. CFHR3 is synthesized as a 330 amino acid precursor that contains an 18 amino acid signal peptide and a 312 amino acid mature chain. Human CFHR3 protein might be involved in complement regulation.

### For Research Use Only