

Recombinant Mouse Cathepsin E/CTSE Protein (aa 60-397, His Tag)

Catalog Number: PKSM041211

Note: Centrifuge before opening to ensure complete recovery of vial contents.

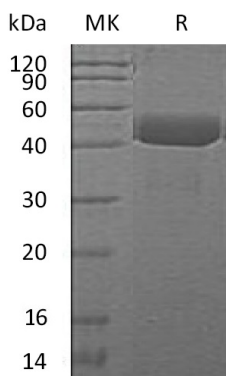
Description

Species	Mouse
Source	HEK293 Cells-derived Mouse Cathepsin E/CTSE protein Ser60-Pro397, with an C-terminal His
Calculated MW	37.0 kDa
Observed MW	42 kDa
Accession	P70269
Bio-activity	Not validated for activity

Properties

Purity	> 95 % as determined by reducing SDS-PAGE.
Endotoxin	< 1.0 EU per µg of the protein as determined by the LAL method.
Storage	Generally, lyophilized proteins are stable for up to 12 months when stored at -20 to -80°C. Reconstituted protein solution can be stored at 4-8°C for 2-7 days. Aliquots of reconstituted samples are stable at < -20°C for 3 months.
Shipping	This product is provided as lyophilized powder which is shipped with ice packs.
Formulation	Lyophilized from a 0.2 µm filtered solution of PBS, pH 7.4. Normally 5% - 8% trehalose, mannitol and 0.01% Tween 80 are added as protectants before lyophilization. Please refer to the specific buffer information in the printed manual.
Reconstitution	Please refer to the printed manual for detailed information.

Data



Background

Cathepsin E is encoded by the ctse gene, exists in the homodimer forms, belongs to the peptidase A1 family. Cathepsin E high expressed in the stomach, clara cells and alveolar macrophages of lung, brain microglia, spleen and activated B-lymphocytes. Cathepsin E may involve in the processing of antigenic peptides during MHC class II-mediated antigen presentation, play a role in activation-induced lymphocyte depletion in the thymus, and in neuronal degeneration and glial cell activation in the brain.

For Research Use Only