

## LDHAL6B Polyclonal Antibody

**catalog number: E-AB-65158**

**Note:** Centrifuge before opening to ensure complete recovery of vial contents.

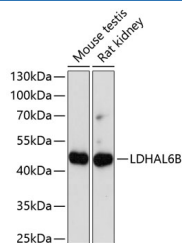
### Description

<b>Reactivity</b>	Mouse;Rat
<b>Immunogen</b>	Recombinant fusion protein of human LDHAL6B (NP_149972.1).
<b>Host</b>	Rabbit
<b>Isotype</b>	IgG
<b>Purification</b>	Affinity purification
<b>Buffer</b>	Phosphate buffered solution, pH 7.4, containing 0.05% stabilizer and 50% glycerol.

### Applications

Applications	Recommended Dilution
<b>WB</b>	1:500-1:2000
<b>IF</b>	1:50-1:200

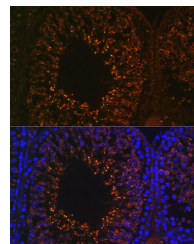
### Data



Western blot analysis of extracts of various cell lines using LDHAL6B Polyclonal Antibody at dilution of 1:1000.

**Observed-MW:42 kDa**

**Calculated-MW:41 kDa**



Immunofluorescence analysis of Rat testis using LDHAL6B Polyclonal Antibody at dilution of 1:100. Blue: DAPI for nuclear staining.

### Preparation & Storage

<b>Storage</b>	Store at -20°C Valid for 12 months. Avoid freeze / thaw cycles.
<b>Shipping</b>	The product is shipped with ice pack, upon receipt, store it immediately at the temperature recommended.

### Background

LDHAL6B belongs to the LDH/MDH superfamily. LDH family. The specific function of the protein remains unknown.

### For Research Use Only