

BRCA2 Polyclonal Antibody

catalog number: **E-AB-40288**

Note: Centrifuge before opening to ensure complete recovery of vial contents.

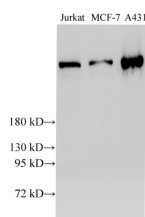
Description

Reactivity	Human; Rat
Immunogen	Recombinant Human Breast cancer type 2 susceptibility protein
Host	Rabbit
Isotype	IgG
Purification	Antigen Affinity Purification
Buffer	PBS with 0.05% Proclin300, 1% protective protein and 50% glycerol, pH7.4

Applications Recommended Dilution

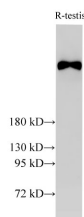
WB	1:1000-1:3000
IHC	1:100-1:200
IF	1:100-1:400

Data



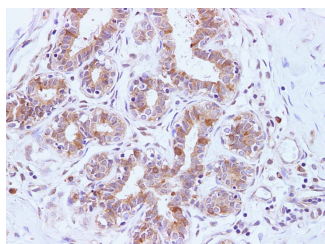
Western Blot analysis of Jurkat, MCF-7 and A431 cells using Western Blot analysis of HeLa cells using BRCA2 Polyclonal Antibody at dilution of 1:2000

Observed-MW:384 kDa
Calculated-MW:384 kDa



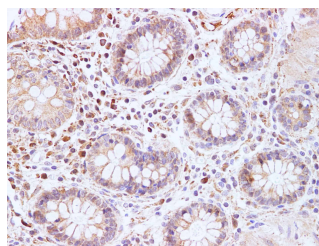
Western Blot analysis of Rat testis using BRCA2 Polyclonal Antibody at dilution of 1:2000

Observed-MW:384 kDa
Calculated-MW:384 kDa

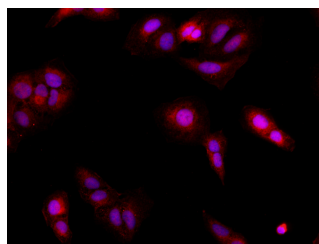


Antibody at dilution of 1:2000

Observed-MW:384 kDa
Calculated-MW:384 kDa



Immunohistochemistry of paraffin-embedded Human colon using BRCA2 Polyclonal Antibody at dilution of 1:100



For Research Use Only

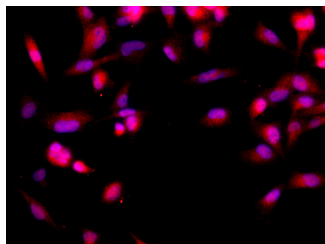
Toll-free: 1-888-852-8623
Web: www.elabscience.com

Tel: 1-832-243-6086
Email: techsupport@elabscience.com

Fax: 1-832-243-6017

Rev. V2.0

Immunohistochemistry of paraffin-embedded Human breast
using BRCA2 Polyclonal Antibody at dilution of 1:100



Immunofluorescence analysis of U-2OS cells using BRCA2
Polyclonal Antibody at dilution of 1:100

Immunofluorescence analysis of U-251MG cells using
BRCA2 Polyclonal Antibody at dilution of 1:100

Preparation & Storage

Storage

Store at -20°C Valid for 12 months. Avoid freeze / thaw cycles.

Shipping

The product is shipped with ice pack, upon receipt, store it immediately at the temperature recommended.

Background

Inherited mutations in BRCA1 and this gene, BRCA2, confer increased lifetime risk of developing breast or ovarian cancer. Both BRCA1 and BRCA2 are involved in maintenance of genome stability, specifically the homologous recombination pathway for double-strand DNA repair. The BRCA2 protein contains several copies of a 70 aa motif called the BRC motif, and these motifs mediate binding to the RAD51 recombinase which functions in DNA repair. BRCA2 is considered a tumor suppressor gene, as tumors with BRCA2 mutations generally exhibit loss of heterozygosity (LOH) of the wild-type allele.

For Research Use Only

Toll-free: 1-888-852-8623
Web: www.elabscience.com

Tel: 1-832-243-6086
Email: techsupport@elabscience.com

Fax: 1-832-243-6017

Rev. V2.0