

PPP1R3B Polyclonal Antibody

catalog number: **E-AB-91006**

Note: Centrifuge before opening to ensure complete recovery of vial contents.

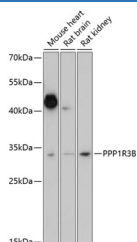
Description

Reactivity	Mouse;Rat
Immunogen	Recombinant fusion protein of human PPP1R3B
Host	Rabbit
Isotype	IgG
Purification	Affinity purification
Buffer	Phosphate buffered solution, pH 7.4, containing 0.05% stabilizer and 50% glycerol.

Applications

Applications	Recommended Dilution
WB	1:500-1:2000

Data



Western blot analysis of extracts of various cell lines using
PPP1R3B Polyclonal Antibody at 1:1000 dilution.

Observed-MW:33 kDa

Calculated-MW:32 kDa

Preparation & Storage

Storage	Store at -20°C Valid for 12 months. Avoid freeze / thaw cycles.
Shipping	The product is shipped with ice pack, upon receipt, store it immediately at the temperature recommended.

Background

This gene encodes the catalytic subunit of the serine/threonine phosphatase, protein phosphatase-1. The encoded protein is expressed in liver and skeletal muscle tissue and may be involved in regulating glycogen synthesis in these tissues. This gene may be involved in type 2 diabetes and maturity-onset diabetes of the young. Alternate splicing results in multiple transcript variants that encode the same protein.

For Research Use Only