

PE/Cyanine5 Anti-Human CD146 Antibody[AA98]

Catalog Number: E-AB-F1417G

Note: Centrifuge before opening to ensure complete recovery of vial contents.

Description

| | |
|--------------------------------|--|
| Reactivity | Human |
| Host | Mouse |
| Isotype | Mouse IgG2a, κ |
| Clone No. | AA98 |
| Isotype Control | PE/Cyanine5 Mouse IgG2a, κ Isotype Control[C1.18.4] [Product E-AB-F09802G] |
| Conjugation | PE/Cyanine 5 |
| Conjugation Information | PE/Cyanine5 is designed to be excited by the Blue (488 nm), Green (532 nm) and yellow-green (561 nm) lasers and detected using an optical filter centered near 670 nm (e.g., a 690/50 nm bandpass filter). |
| Storage Buffer | Phosphate buffered solution, pH 7.2, containing 0.09% sodium azide and 1% BSA. |

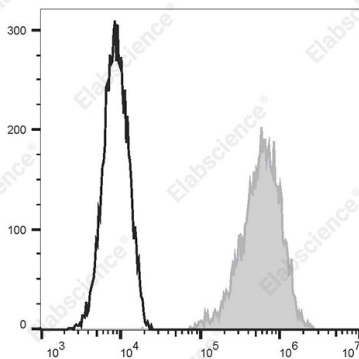
Applications

FCM

Recommended usage

Each lot of this antibody is quality control tested by flow cytometric analysis. **The amount of the reagent is suggested to be used 5 μL of antibody per test (million cells in 100 μL staining volume or per 100 μL of whole blood).** Please check your vial before the experiment. Since applications vary, the appropriate dilutions must be determined for individual use.

Data



Staining of HeLa cells with PE/Cyanine5 Anti-Human CD146 Antibody[AA98] (filled gray histogram) or PE/Cyanine5 Mouse IgG2a, κ Isotype Control (empty black histogram). Total viable cells were used for analysis.

Preparation & Storage

| | |
|-----------------|---|
| Storage | Keep as concentrated solution. This product can be stored at 2-8°C for 12 months. Please protected from prolonged exposure to light and do not freeze. |
| Shipping | Ice bag |

Antigen Information

| | |
|-------------------|--------|
| Uniprot ID | P43121 |
| Gene ID | 4162 |

For Research Use Only

Background

CD146 is a 118 kD integral transmembrane glycoprotein that is also known as MUC18, S-Endo, MCAM, and Mel-CAM (melanoma cell adhesion molecule). It belongs to the immunoglobulin superfamily. CD146 is expressed on melanoma cells, epithelial cells, endothelial cells, fibroblasts, activated T cells, multipotent mesenchymal stromal cells, and activated keratinocytes. CD146 mediates heterophilic cell adhesion and regulates monocyte transendothelial migration. The ligand of CD146 remains to be identified.