

Recombinant Human 14-3-3 eta/YWHAH Protein (GST Tag)

Catalog Number: PKSH031391

Note: Centrifuge before opening to ensure complete recovery of vial contents.

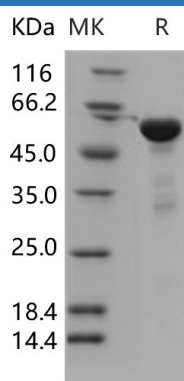
Description

Species	Human
Source	E.coli-derived Human 14-3-3 eta/YWHAH protein Gly 2-Asn 246, with an N-terminal GST
Calculated MW	55.0 kDa
Observed MW	55 kDa
Accession	Q04917
Bio-activity	Not validated for activity

Properties

Purity	> 90 % as determined by reducing SDS-PAGE.
Endotoxin	Please contact us for more information.
Storage	Generally, lyophilized proteins are stable for up to 12 months when stored at -20 to -80 °C. Reconstituted protein solution can be stored at 4-8°C for 2-7 days. Aliquots of reconstituted samples are stable at < -20°C for 3 months.
Shipping	This product is provided as lyophilized powder which is shipped with ice packs.
Formulation	Lyophilized from sterile 20mM Tris, 0.15M NaCl, 20mM GST, pH 8.0 Normally 5% - 8% trehalose, mannitol and 0.01% Tween 80 are added as protectants before lyophilization. Please refer to the specific buffer information in the printed manual.
Reconstitution	Please refer to the printed manual for detailed information.

Data



> 90 % as determined by reducing SDS-PAGE.

Background

YWHAH, the gene encoding the 14-3-3eta isoform, is highly expressed in retinal ganglion cells (RGC). YWHAH is a positional and functional candidate gene for both schizophrenia and bipolar disorder (BP). It is located on chromosome 22q12.3, a region which has been implicated by linkage studies in both BP and schizophrenia.

For Research Use Only