

HRP-conjugated Lamin B1 Monoclonal Antibody

catalog number: AN00292HP



Note: Centrifuge before opening to ensure complete recovery of vial contents.

Description

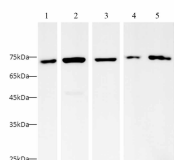
| | |
|---------------------|--|
| Reactivity | Human |
| Immunogen | Recombinant human Lamin B1 protein by E. Coli |
| Host | Mouse |
| Isotype | IgG2b |
| Clone | 7H10 |
| Purification | Protein A/G Purification |
| Conjugation | HRP |
| buffer | PBS with 0.05% proclin 300, 1% protective protein and 50% glycerol,pH7.4 |

Applications

Recommended Dilution

| | |
|-----------|---------------|
| WB | 1:2500-1:5000 |
|-----------|---------------|

Data



Western blot with HRP-conjugated Lamin B1 Monoclonal Antibody at dilution of 1:5000.lane 1:Raji whole cell lysate, lane 2:HL-60 whole cell lysate, lane 3:HeLa whole cell lysate, lane 4:SH-SY5Y whole cell lysate,lane 5:THP-1 whole cell lysate

Observed-MV:70 kDa

Calculated-MV:66 kDa

Preparation & Storage

| | |
|-----------------|---|
| Storage | Store at -20°C Valid for 12 months. Avoid freeze / thaw cycles. Protected from prolonged exposure to light. |
| Shipping | The product is shipped with ice pack,upon receipt,store it immediately at the temperature recommended. |

Background

Lamins are components of the nuclear lamina,a fibrous layer on the nucleoplasmic side of the inner nuclear membrane, which is thought to provide a framework for the nuclear envelope and may also interact with chromatin.

For Research Use Only

A Reliable Research Partner in Life Science and Medicine
Tel: 400-999-2100

Email:techsupport@elabscience.cn

Web:www.elabscience.cn

Rev. V1.4